

Product datasheet for **TA349306**

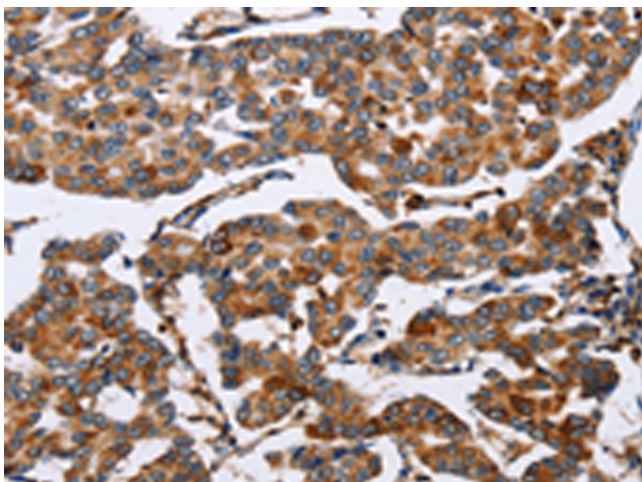
ENPP5 Rabbit Polyclonal Antibody

Product data:

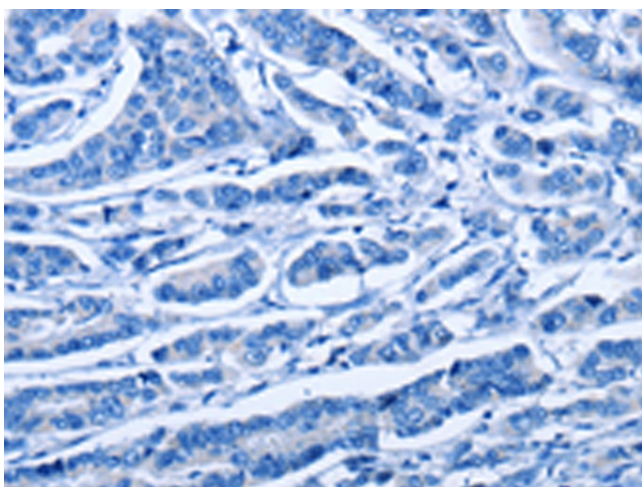
Product Type:	Primary Antibodies
Applications:	IHC
Recommended Dilution:	IHC: 100-300 Positive control: Human breast cancer Predicted cell location: Cytoplasm
Reactivity:	Human, Mouse, Rat
Host:	Rabbit
Isotype:	IgG
Clonality:	Polyclonal
Immunogen:	Fusion protein of human ENPP5
Formulation:	pH7.4 PBS, 0.05% NaN ₃ , 40% Glycerol
Concentration:	lot specific
Purification:	Antigen affinity purification
Conjugation:	Unconjugated
Storage:	Store at -20°C as received.
Stability:	Stable for 12 months from date of receipt.
Gene Name:	ectonucleotide pyrophosphatase/phosphodiesterase 5 (putative)
Database Link:	NP_067547 Entrez Gene 59084 Human Q9UJA9
Background:	ENPP5 is a single-pass membrane protein that belongs to the nucleotide pyrophosphatase/phosphodiesterase family. It may play a role in neuronal cell communication, and it lacks nucleotide pyrophosphatase and lysopholipase D activity.
Synonyms:	NPP-5
Protein Families:	Secreted Protein, Transmembrane



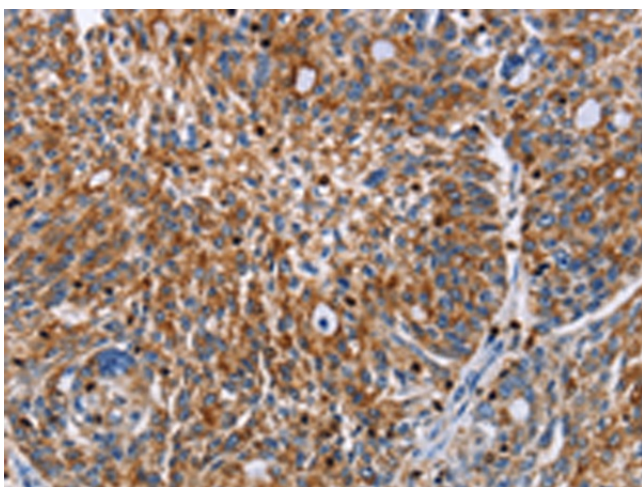
[View online »](#)

Product images:

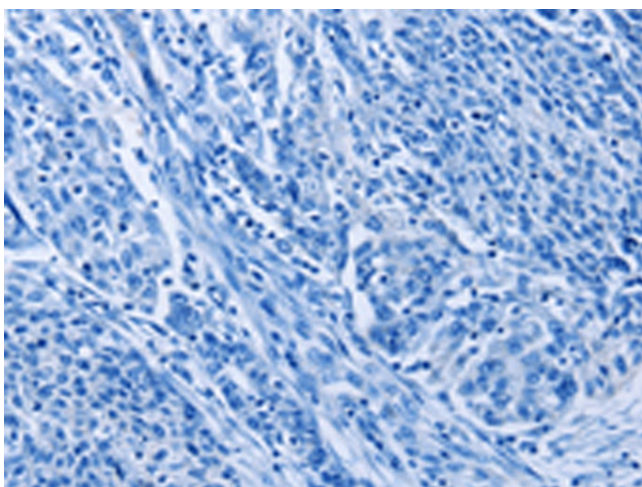
Immunohistochemistry of paraffin-embedded Human breast cancer tissue using TA349306 (ENPP5 Antibody) at dilution 1/60 (Original magnification: $\times 200$)



Immunohistochemistry of paraffin-embedded Human breast cancer tissue using TA349306 (ENPP5 Antibody) at dilution 1/60, treated with fusion protein. (Original magnification: $\times 200$)



Immunohistochemistry of paraffin-embedded Human ovarian cancer tissue using TA349306 (ENPP5 Antibody) at dilution 1/60 (Original magnification: $\times 200$)



Immunohistochemistry of paraffin-embedded Human ovarian cancer tissue using TA349306 (ENPP5 Antibody) at dilution 1/60, treated with fusion protein. (Original magnification: $\times 200$)