

Product datasheet for **TA349305S**

ELAVL1 Rabbit Polyclonal Antibody

Product data:

Product Type:	Primary Antibodies
Applications:	IHC, WB
Recommended Dilution:	WB: 500-2000 WB positive control: HeLa, NIH/3T3, A172 and A431 cells IHC: 25-100 Positive control: Human lung cancer Predicted cell location: Nucleus and Cytoplasm
Reactivity:	Human, Mouse
Host:	Rabbit
Isotype:	IgG
Clonality:	Polyclonal
Immunogen:	Fusion protein of human ELAVL1
Formulation:	pH7.4 PBS, 0.05% NaN ₃ , 40% Glycerol
Purification:	Antigen affinity purification
Conjugation:	Unconjugated
Storage:	Store at -20°C as received.
Stability:	Stable for 12 months from date of receipt.
Predicted Protein Size:	36 kDa
Gene Name:	ELAV like RNA binding protein 1
Database Link:	NP_001410 Entrez Gene 15568 Mouse Entrez Gene 1994 Human Q15717



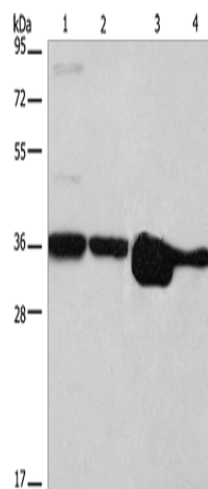
[View online »](#)

Background:

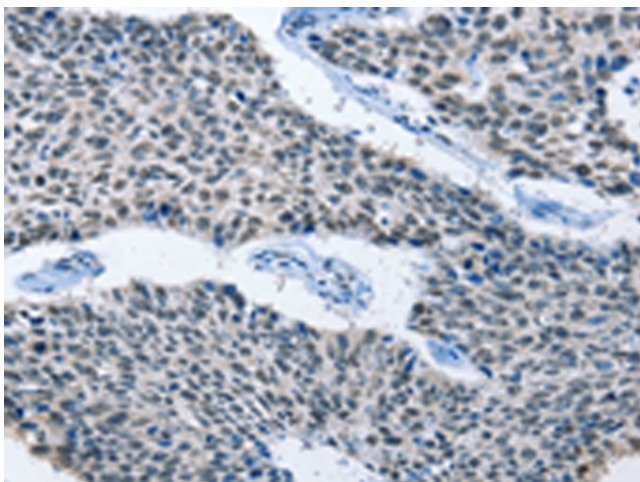
The protein encoded by this gene is a member of the ELAVL family of RNA-binding proteins that contain several RNA recognition motifs, and selectively bind AU-rich elements (AREs) found in the 3' untranslated regions of mRNAs. AREs signal degradation of mRNAs as a means to regulate gene expression, thus by binding AREs, the ELAVL family of proteins play a role in stabilizing ARE-containing mRNAs. This gene has been implicated in a variety of biological processes and has been linked to a number of diseases, including cancer. It is highly expressed in many cancers, and could be potentially useful in cancer diagnosis, prognosis, and therapy.

Synonyms:

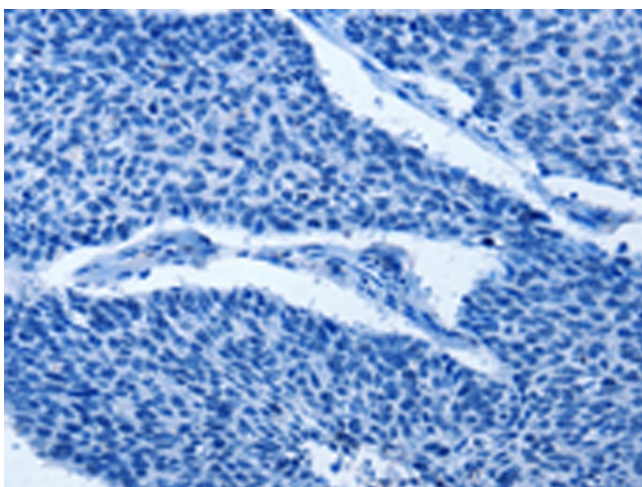
ELAV1; Hua; HUR; MelG

Product images:

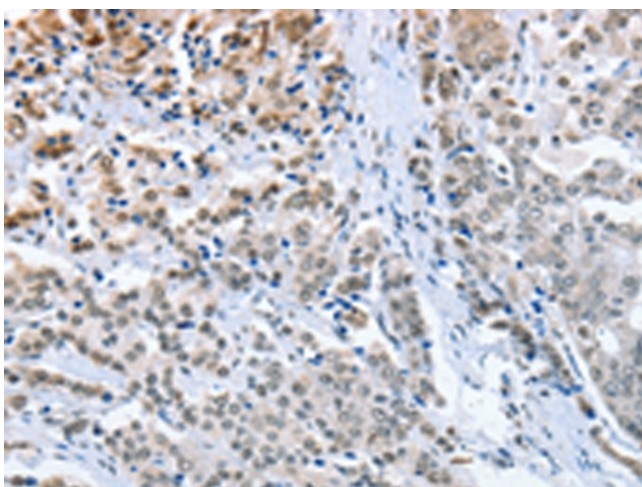
Gel: 10%SDS-PAGE
Lysate: 40 µg
Lane 1-4: HeLa cells
NIH/3T3 cells
A172 cells
A431 cells
Primary antibody: [TA349305] (ELAVL1 Antibody)
at dilution 1/800
Secondary antibody: Goat anti rabbit IgG at
1/8000 dilution
Exposure time: 5 seconds



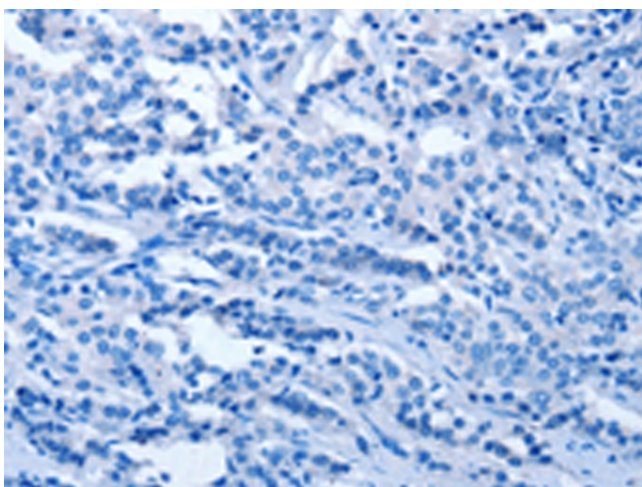
Immunohistochemistry of paraffin-embedded
Human lung cancer tissue using [TA349305]
(ELAVL1 Antibody) at dilution 1/50 (Original
magnification: ×200)



Immunohistochemistry of paraffin-embedded Human lung cancer tissue using [TA349305] (ELAVL1 Antibody) at dilution 1/50, treated with fusion protein. (Original magnification: $\times 200$)



Immunohistochemistry of paraffin-embedded Human prostate cancer tissue using [TA349305] (ELAVL1 Antibody) at dilution 1/50 (Original magnification: $\times 200$)



Immunohistochemistry of paraffin-embedded Human prostate cancer tissue using [TA349305] (ELAVL1 Antibody) at dilution 1/50, treated with fusion protein. (Original magnification: $\times 200$)