

Product datasheet for **TA349303S**

EGFL8 Rabbit Polyclonal Antibody

Product data:

Product Type:	Primary Antibodies
Applications:	IHC
Recommended Dilution:	IHC: 50-200 Positive control: Human brain Predicted cell location: Cytoplasm
Reactivity:	Human, Mouse, Rat
Host:	Rabbit
Isotype:	IgG
Clonality:	Polyclonal
Immunogen:	Fusion protein of human EGFL8
Formulation:	pH7.4 PBS, 0.05% NaN ₃ , 40% GlycerolIn
Purification:	Antigen affinity purification
Conjugation:	Unconjugated
Storage:	Store at -20°C as received.
Stability:	Stable for 12 months from date of receipt.
Gene Name:	EGF like domain multiple 8
Database Link:	NP_085155 Entrez Gene 80864 Human Q99944

Background: The epidermal growth factor (EGF) repeat-containing proteins constitute an expanding family of proteins that are involved in several cellular activities, such as blood coagulation, fibrinolysis, cell adhesion, and neural and vertebrate development. EGFL8 (EGF-like domain-containing protein 8), also known as C6orf8, NG3 and VE-statin-2, is a 293 amino acid secreted protein that contains two EGF-like domains and one EMI domain. Via its EGF and EMI domains, EGFL8 may participate in protein-protein interactions that correlate with cellular proliferation and developmental signaling events. In mice, EGFL8 is expressed predominately in brain, kidney, lung and thymus.

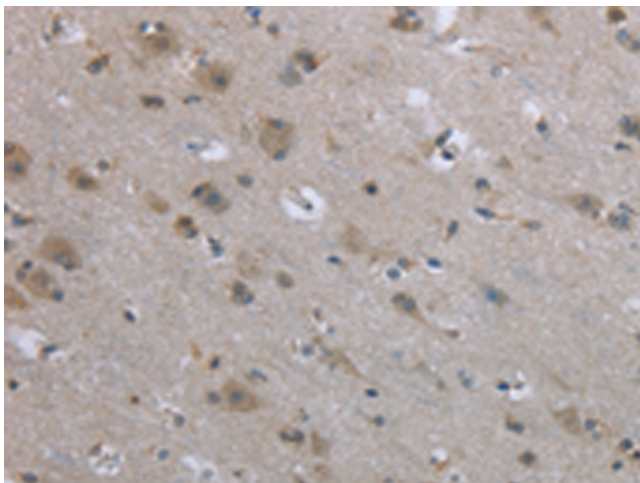
Synonyms: C6orf8; NG3



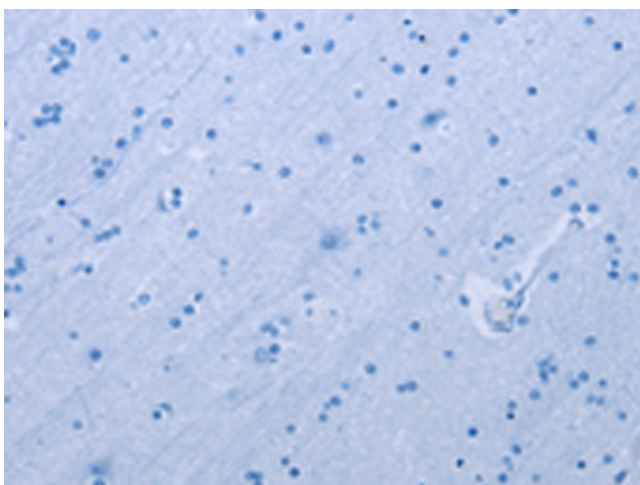
[View online »](#)

Protein Families: Secreted Protein

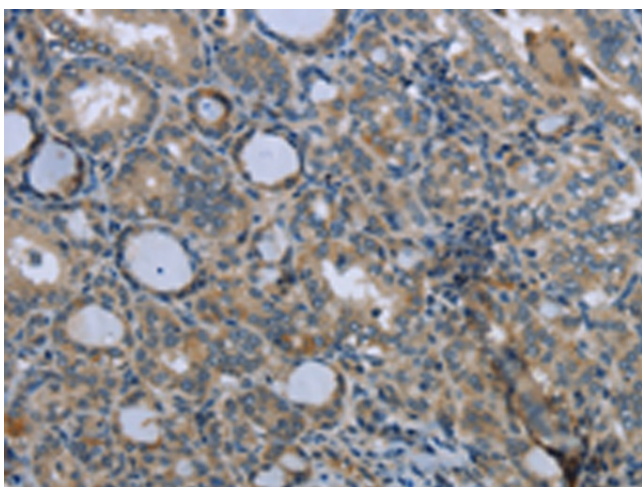
Product images:



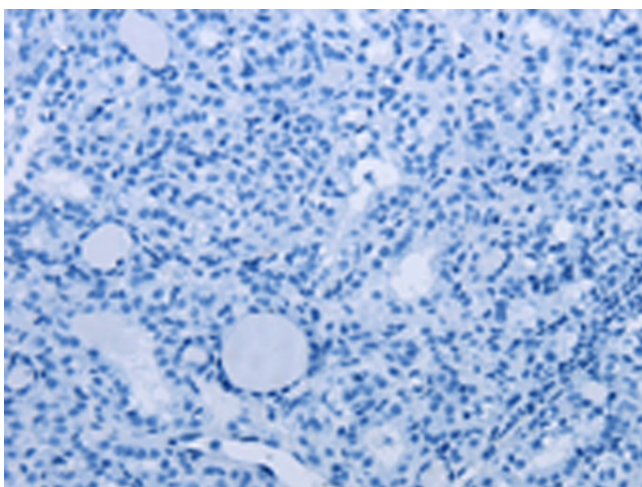
Immunohistochemistry of paraffin-embedded Human brain tissue using [TA349303] (EGFL8 Antibody) at dilution 1/40 (Original magnification: ×200)



Immunohistochemistry of paraffin-embedded Human brain tissue using [TA349303] (EGFL8 Antibody) at dilution 1/40, treated with fusion protein. (Original magnification: ×200)



Immunohistochemistry of paraffin-embedded Human thyroid cancer tissue using [TA349303] (EGFL8 Antibody) at dilution 1/40 (Original magnification: $\times 200$)



Immunohistochemistry of paraffin-embedded Human thyroid cancer tissue using [TA349303] (EGFL8 Antibody) at dilution 1/40, treated with fusion protein. (Original magnification: $\times 200$)