

Product datasheet for **TA349302**

E2F6 Rabbit Polyclonal Antibody

Product data:

Product Type:	Primary Antibodies
Applications:	IHC, WB
Recommended Dilution:	WB: 500-2000 WB positive control: LoVo and A549 cells, human hepatocellular carcinoma tissue, Jurkat and HeLa cells IHC: 100-300 Positive control: Human cervical cancer Predicted cell location: Cytoplasm
Reactivity:	Human, Mouse
Host:	Rabbit
Isotype:	IgG
Clonality:	Polyclonal
Immunogen:	Fusion protein of human E2F6
Formulation:	pH7.4 PBS, 0.05% NaN ₃ , 40% Glycerol
Concentration:	lot specific
Purification:	Antigen affinity purification
Conjugation:	Unconjugated
Storage:	Store at -20°C as received.
Stability:	Stable for 12 months from date of receipt.
Predicted Protein Size:	32 kDa
Gene Name:	E2F transcription factor 6
Database Link:	NP_937987 Entrez Gene 50496 Mouse Entrez Gene 1876 Human O75461



[View online »](#)

Background:

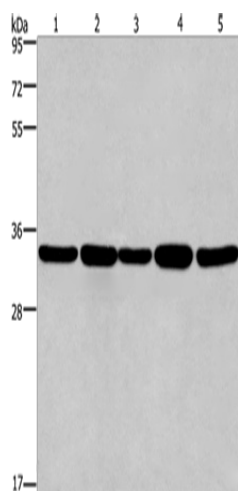
This gene encodes a member of a family of transcription factors that play a crucial role in the control of the cell cycle. The protein encoded by this gene lacks the transactivation and tumor suppressor protein association domains found in other family members, and contains a modular suppression domain that functions in the inhibition of transcription. It interacts in a complex with chromatin modifying factors. There are pseudogenes for this gene on chromosomes 22 and X. Alternative splicing results in multiple transcript variants.

Synonyms:

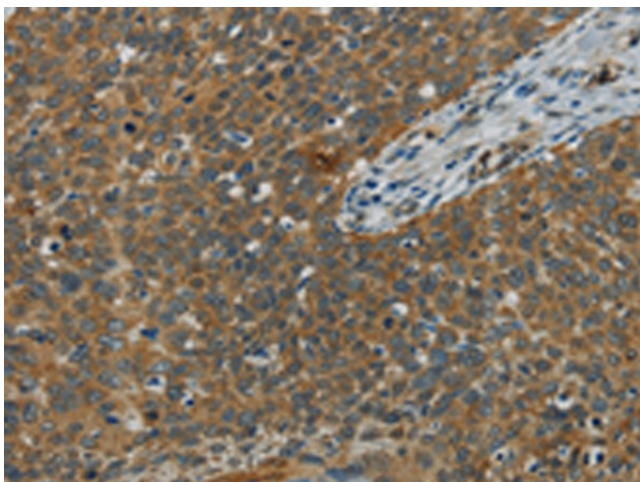
E2F-6

Protein Families:

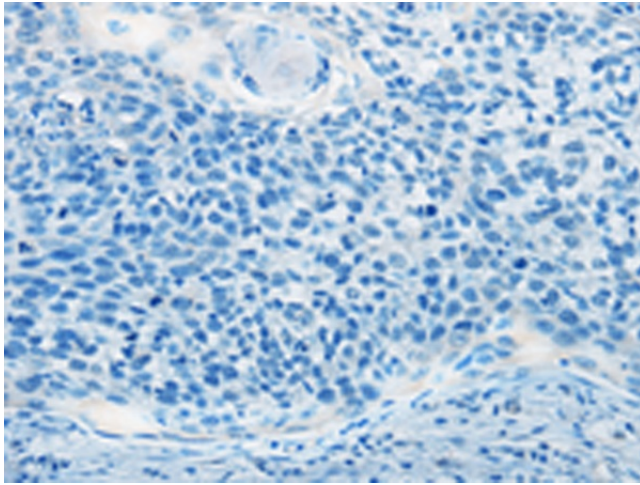
Transcription Factors

Product images:


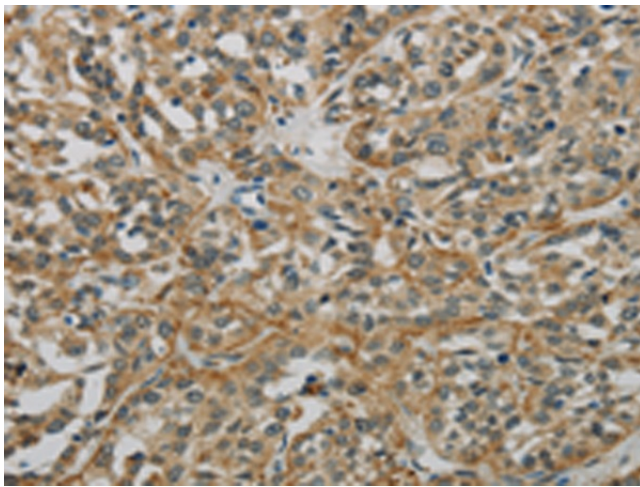
Gel: 8%SDS-PAGE
 Lysate: 40 µg
 Lane 1-5: LoVo cells
 A549 cells
 human hepatocellular carcinoma tissue
 Jurkat cells
 HeLa cells
 Primary antibody: TA349302 (E2F6 Antibody) at dilution 1/650
 Secondary antibody: Goat anti rabbit IgG at 1/8000 dilution
 Exposure time: 30 seconds



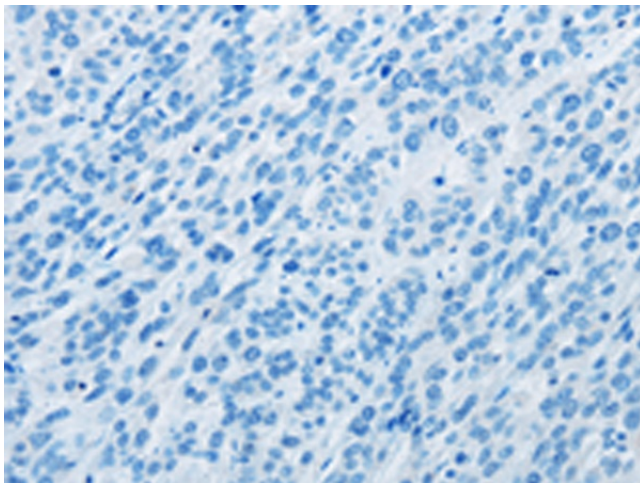
Immunohistochemistry of paraffin-embedded Human cervical cancer tissue using TA349302 (E2F6 Antibody) at dilution 1/60 (Original magnification: ×200)



Immunohistochemistry of paraffin-embedded Human cervical cancer tissue using TA349302 (E2F6 Antibody) at dilution 1/60, treated with fusion protein. (Original magnification: $\times 200$)



Immunohistochemistry of paraffin-embedded Human esophagus cancer tissue using TA349302 (E2F6 Antibody) at dilution 1/60 (Original magnification: $\times 200$)



Immunohistochemistry of paraffin-embedded Human esophagus cancer tissue using TA349302 (E2F6 Antibody) at dilution 1/60, treated with fusion protein. (Original magnification: $\times 200$)