

## Product datasheet for **TA349295**

### DKK1 Rabbit Polyclonal Antibody

#### Product data:

Product Type:	Primary Antibodies
Applications:	WB
Recommended Dilution:	WB: 500-2000 WB positive control: A549 cell lysate
Reactivity:	Human, Mouse
Host:	Rabbit
Isotype:	IgG
Clonality:	Polyclonal
Immunogen:	Fusion protein of human DKK1
Formulation:	pH7.4 PBS, 0.05% NaN <sub>3</sub> , 40% Glycerol
Concentration:	lot specific
Purification:	Antigen affinity purification
Conjugation:	Unconjugated
Storage:	Store at -20°C as received.
Stability:	Stable for 12 months from date of receipt.
Predicted Protein Size:	29 kDa
Gene Name:	dickkopf WNT signaling pathway inhibitor 1
Database Link:	<a href="#">NP_036374</a> <a href="#">Entrez Gene 13380 Mouse</a> <a href="#">Entrez Gene 22943 Human</a> <a href="#">O94907</a>
Background:	This gene encodes a protein that is a member of the dickkopf family. It is a secreted protein with two cysteine rich regions and is involved in embryonic development through its inhibition of the WNT signaling pathway. Elevated levels of DKK1 in bone marrow plasma and peripheral blood is associated with the presence of osteolytic bone lesions in patients with multiple myeloma.
Synonyms:	DKK-1; SK

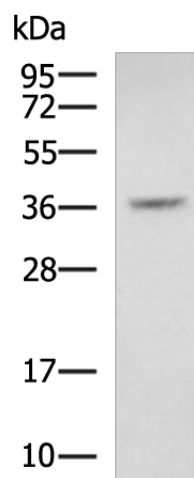


[View online »](#)

**Protein Families:** Adult stem cells, Cancer stem cells, Druggable Genome, ES Cell Differentiation/IPS, Secreted Protein, Stem cell relevant signaling - Wnt Signaling pathway

**Protein Pathways:** Wnt signaling pathway

**Product images:**



Gel: 12%SDS-PAGE  
Lysate: 40  $\mu$ g  
Lane: A549 cell lysate  
Primary antibody: TA349295 (DKK1 Antibody) at dilution 1/1000  
Secondary antibody: Goat anti rabbit IgG at 1/5000 dilution  
Exposure time: 10 seconds