

Product datasheet for **TA349284S**

Claudin 23 (CLDN23) Rabbit Polyclonal Antibody

Product data:

| | |
|-------------------------|---|
| Product Type: | Primary Antibodies |
| Applications: | IHC, WB |
| Recommended Dilution: | WB: 200-1000 WB positive control: Hela cells IHC: 25-100 Positive control: Human brain Predicted cell location: Cytoplasm |
| Reactivity: | Human |
| Host: | Rabbit |
| Isotype: | IgG |
| Clonality: | Polyclonal |
| Immunogen: | Fusion protein of human CLDN23 |
| Formulation: | pH7.4 PBS, 0.05% NaN ₃ , 40% Glycerol |
| Purification: | Antigen affinity purification |
| Conjugation: | Unconjugated |
| Storage: | Store at -20°C as received. |
| Stability: | Stable for 12 months from date of receipt. |
| Predicted Protein Size: | 32 kDa |
| Gene Name: | claudin 23 |
| Database Link: | NP_919260 Entrez Gene 137075 Human Q96B33 |

Background: This gene encodes a member of the claudin family. Claudins are integral membrane proteins and components of tight junction strands. Tight junction strands serve as a physical barrier to prevent solutes and water from passing freely through the paracellular space between epithelial or endothelial cell sheets, and also play critical roles in maintaining cell polarity and signal transductions. This gene is expressed in germinal center B-cells, placenta and stomach as well as in colon tumor. This gene is down-regulated in intestinal type gastric cancer.

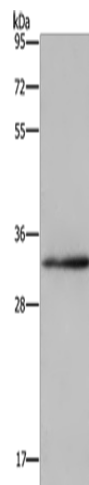


[View online »](#)

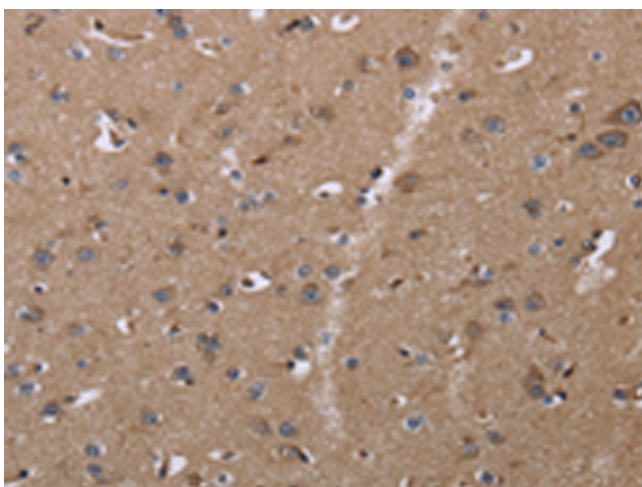
Synonyms: CLDNL; hCG1646163

Protein Pathways: Cell adhesion molecules (CAMs), Leukocyte transendothelial migration, Tight junction

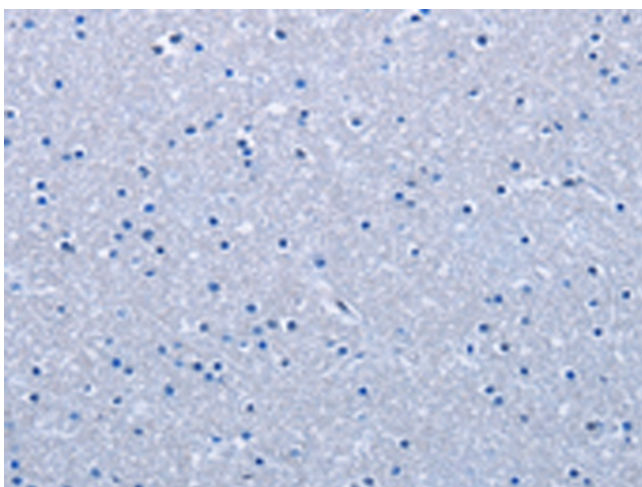
Product images:



Gel: 10%SDS-PAGE
Lysate: 40 µg
Lane: HeLa cells
Primary antibody: [TA349284] (CLDN23 Antibody) at dilution 1/200
Secondary antibody: Goat anti rabbit IgG at 1/8000 dilution
Exposure time: 3 minutes



Immunohistochemistry of paraffin-embedded Human brain tissue using [TA349284] (CLDN23 Antibody) at dilution 1/30 (Original magnification: ×200)



Immunohistochemistry of paraffin-embedded Human brain tissue using [TA349284] (CLDN23 Antibody) at dilution 1/30, treated with fusion protein. (Original magnification: $\times 200$)