

## Product datasheet for **TA349284**

### Claudin 23 (CLDN23) Rabbit Polyclonal Antibody

#### Product data:

Product Type:	Primary Antibodies
Applications:	IHC, WB
Recommended Dilution:	WB: 200-1000 WB positive control: Hela cells IHC: 25-100 Positive control: Human brain Predicted cell location: Cytoplasm
Reactivity:	Human
Host:	Rabbit
Isotype:	IgG
Clonality:	Polyclonal
Immunogen:	Fusion protein of human CLDN23
Formulation:	pH7.4 PBS, 0.05% NaN <sub>3</sub> , 40% Glycerol
Concentration:	lot specific
Purification:	Antigen affinity purification
Conjugation:	Unconjugated
Storage:	Store at -20°C as received.
Stability:	Stable for 12 months from date of receipt.
Predicted Protein Size:	32 kDa
Gene Name:	claudin 23
Database Link:	<a href="#">NP_919260</a> <a href="#">Entrez Gene 137075 Human</a> <a href="#">Q96B33</a>



[View online »](#)

**Background:**

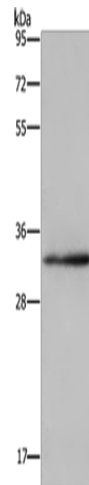
This gene encodes a member of the claudin family. Claudins are integral membrane proteins and components of tight junction strands. Tight junction strands serve as a physical barrier to prevent solutes and water from passing freely through the paracellular space between epithelial or endothelial cell sheets, and also play critical roles in maintaining cell polarity and signal transductions. This gene is expressed in germinal center B-cells, placenta and stomach as well as in colon tumor. This gene is down-regulated in intestinal type gastric cancer.

**Synonyms:**

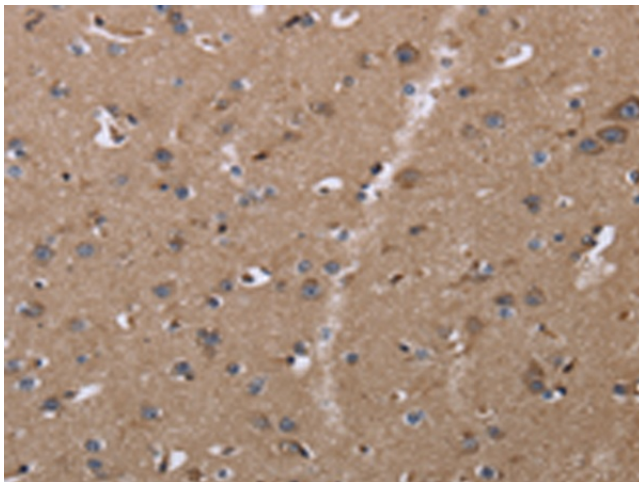
CLDNL; hCG1646163

**Protein Pathways:**

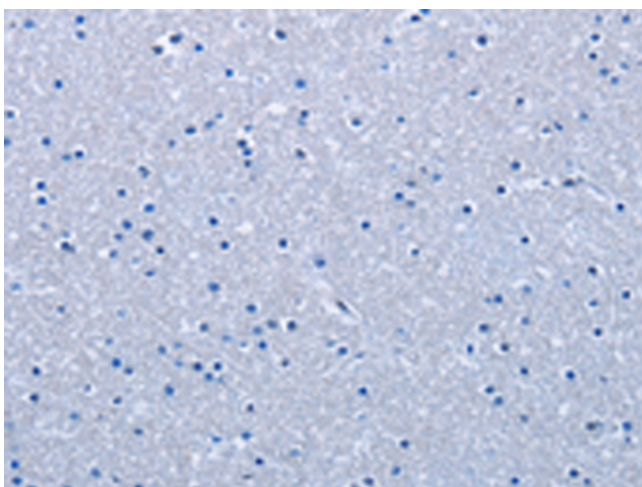
Cell adhesion molecules (CAMs), Leukocyte transendothelial migration, Tight junction

**Product images:**


Gel: 10%SDS-PAGE  
 Lysate: 40 µg  
 Lane: HeLa cells  
 Primary antibody: TA349284 (CLDN23 Antibody) at dilution 1/200  
 Secondary antibody: Goat anti rabbit IgG at 1/8000 dilution  
 Exposure time: 3 minutes



Immunohistochemistry of paraffin-embedded Human brain tissue using TA349284 (CLDN23 Antibody) at dilution 1/30 (Original magnification: ×200)



Immunohistochemistry of paraffin-embedded Human brain tissue using TA349284 (CLDN23 Antibody) at dilution 1/30, treated with fusion protein. (Original magnification:  $\times 200$ )