

## Product datasheet for **TA349283**

### CLDND1 Rabbit Polyclonal Antibody

#### Product data:

Product Type:	Primary Antibodies
Applications:	IHC, WB
Recommended Dilution:	ELISA: 2000-5000, WB: 200-1000, IHC: 50-200
Reactivity:	Human, Mouse
Host:	Rabbit
Isotype:	IgG
Clonality:	Polyclonal
Immunogen:	Fusion protein of human CLDND1
Formulation:	pH7.4 PBS, 0.05% NaN <sub>3</sub> , 40% Glycerol
Concentration:	lot specific
Purification:	Antigen affinity purification
Conjugation:	Unconjugated
Storage:	Store at -20°C as received.
Stability:	Stable for 12 months from date of receipt.
Predicted Protein Size:	29 kDa
Gene Name:	claudin domain containing 1
Database Link:	<a href="#">NP_063948</a> <a href="#">Entrez Gene 224250 Mouse</a> <a href="#">Entrez Gene 56650 Human</a> <a href="#">Q9NY35</a>



[View online »](#)

**Background:**

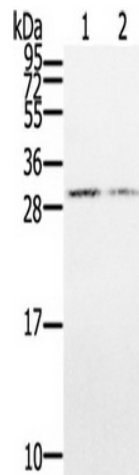
CLDND1 (claudin domain containing 1), also known as C3orf4 or HSPC174, is a 253 amino acid multi-pass membrane protein that is expressed at high levels in adult brain and at lower levels in adult heart. Existing as two alternatively spliced isoforms, CLDND1 is encoded by a gene that maps to human chromosome 3, which houses over 1,100 genes, including a chemokine receptor (CKR) gene cluster and a variety of human cancer-related gene loci. Key tumor suppressing genes on chromosome 3 include those that encode the apoptosis mediator RASSF1, the cell migration regulator HYAL1 and the angiogenesis suppressor SEMA3B. Marfan Syndrome, porphyria, von Hippel-Lindau syndrome, osteogenesis imperfecta and Charcot-Marie-Tooth Disease are a few of the numerous genetic diseases associated with chromosome 3.

**Synonyms:**

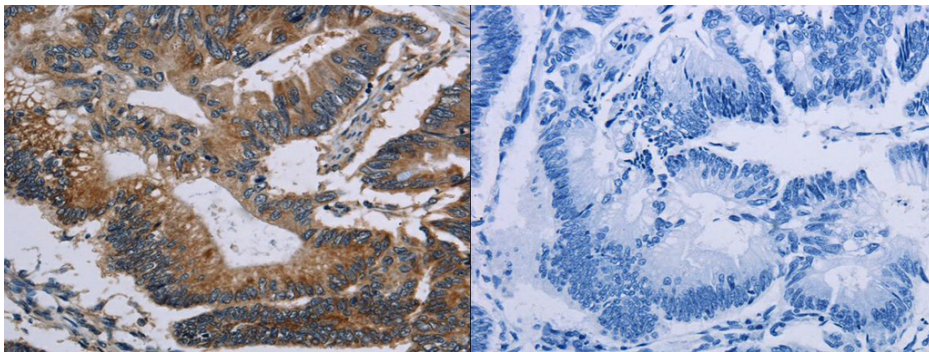
C3orf4; GENX-3745

**Protein Families:**

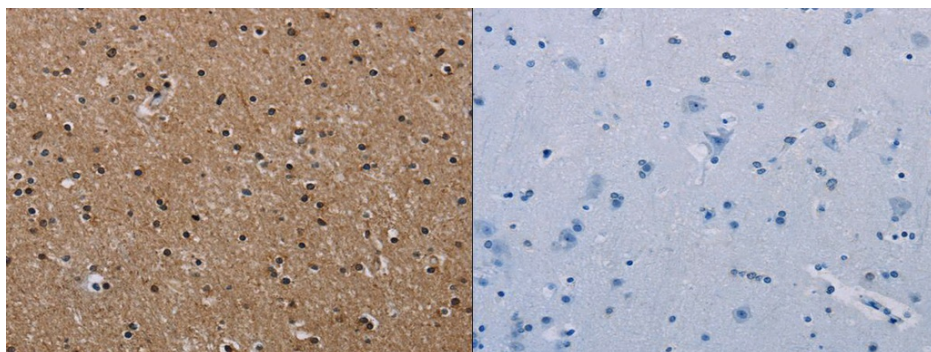
Transmembrane

**Product images:**


Gel: 12%SDS-PAGE, Lysate: 40 ug, Lane 1-2: Hepg2 cells, K562 cells, Primary antibody: (CLDND1 Antibody) at dilution 1/500, Secondary antibody: Goat anti rabbit IgG at 1/8000 dilution, Exposure time: 3 minutes



The image on the left is immunohistochemistry of paraffin-embedded Human colon cancer tissue using (CLDND1 Antibody) at dilution 1/50, on the right is treated with fusion protein. (Original magnification:  $\times 200$ )



The image on the left is immunohistochemistry of paraffin-embedded Human brain tissue using (CLDND1 Antibody) at dilution 1/50, on the right is treated with fusion protein. (Original magnification:  $\times 200$ )