

Product datasheet for **TA349282**

Collagen III (COL3A1) Rabbit Polyclonal Antibody

Product data:

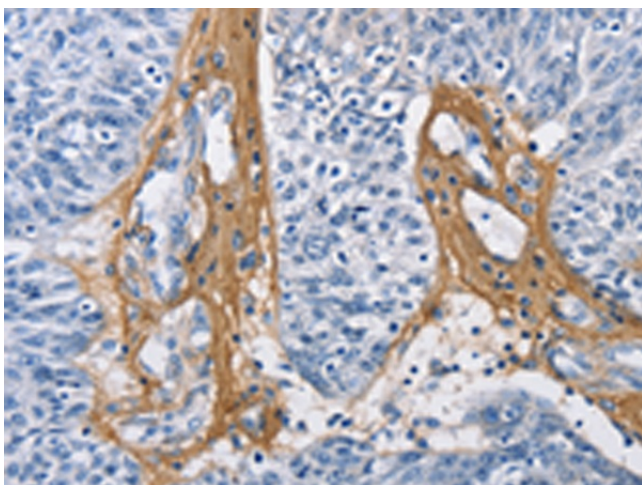
Product Type:	Primary Antibodies
Applications:	IHC
Recommended Dilution:	IHC: 50-200 Positive control: Human ovarian cancer Predicted cell location: Cytoplasm
Reactivity:	Human, Mouse, Rat
Host:	Rabbit
Isotype:	IgG
Clonality:	Polyclonal
Immunogen:	Fusion protein of human COL3A1
Formulation:	pH7.4 PBS, 0.05% NaN ₃ , 40% Glycerol
Concentration:	lot specific
Purification:	Antigen affinity purification
Conjugation:	Unconjugated
Storage:	Store at -20°C as received.
Stability:	Stable for 12 months from date of receipt.
Gene Name:	collagen type III alpha 1 chain
Database Link:	NP_000081 Entrez Gene 12825 Mouse Entrez Gene 84032 Rat Entrez Gene 1281 Human P02461
Background:	This gene encodes the pro-alpha1 chains of type III collagen, a fibrillar collagen that is found in extensible connective tissues such as skin, lung, uterus, intestine and the vascular system, frequently in association with type I collagen. Mutations in this gene are associated with Ehlers-Danlos syndrome types IV, and with aortic and arterial aneurysms. Two transcripts, resulting from the use of alternate polyadenylation signals, have been identified for this gene.
Synonyms:	EDS4A
Protein Families:	Druggable Genome



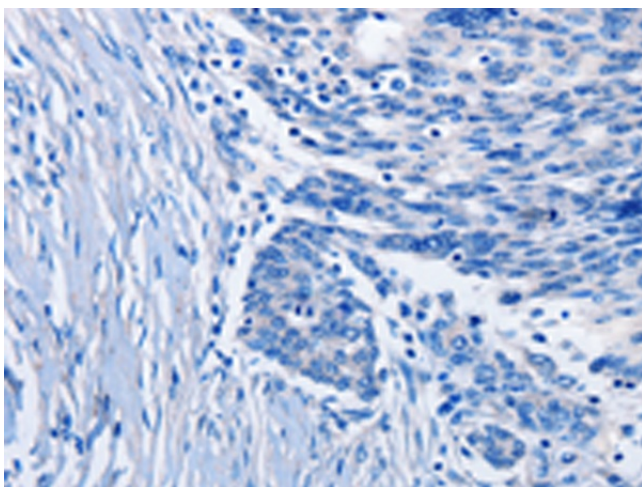
[View online »](#)

Protein Pathways: ECM-receptor interaction, Focal adhesion

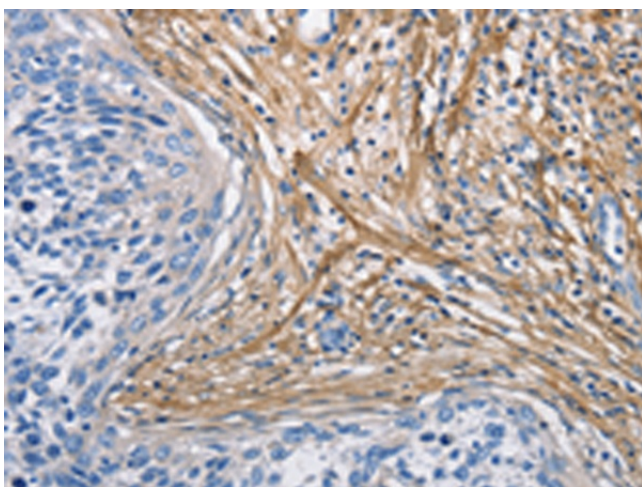
Product images:



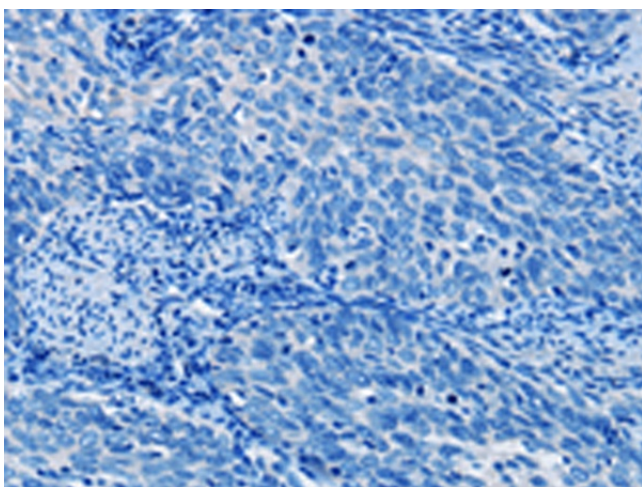
Immunohistochemistry of paraffin-embedded Human ovarian cancer tissue using TA349282 (COL3A1 Antibody) at dilution 1/60 (Original magnification: $\times 200$)



Immunohistochemistry of paraffin-embedded Human ovarian cancer tissue using TA349282 (COL3A1 Antibody) at dilution 1/60, treated with fusion protein. (Original magnification: $\times 200$)



Immunohistochemistry of paraffin-embedded Human cervical cancer tissue using TA349282 (COL3A1 Antibody) at dilution 1/60 (Original magnification: $\times 200$)



Immunohistochemistry of paraffin-embedded Human cervical cancer tissue using TA349282 (COL3A1 Antibody) at dilution 1/60, treated with fusion protein. (Original magnification: $\times 200$)