

## Product datasheet for **TA349276**

### c Fos (FOS) Rabbit Polyclonal Antibody

#### Product data:

Product Type:	Primary Antibodies
Applications:	IHC, WB
Recommended Dilution:	WB: 500-2000 WB positive control: Hela cells IHC: 50-200 Positive control: Human thyroid cancer Predicted cell location: Cytoplasm and Nucleus
Reactivity:	Human, Mouse, Rat
Host:	Rabbit
Isotype:	IgG
Clonality:	Polyclonal
Immunogen:	Fusion protein of human FOS
Formulation:	pH7.4 PBS, 0.05% NaN <sub>3</sub> , 40% Glycerol
Concentration:	lot specific
Purification:	Antigen affinity purification
Conjugation:	Unconjugated
Storage:	Store at -20°C as received.
Stability:	Stable for 12 months from date of receipt.
Predicted Protein Size:	41 kDa
Gene Name:	Fos proto-oncogene, AP-1 transcription factor subunit
Database Link:	<a href="#">NP_005243</a> <a href="#">Entrez Gene 14281 Mouse</a> <a href="#">Entrez Gene 314322 Rat</a> <a href="#">Entrez Gene 2353 Human</a> <a href="#">P01100</a>

**Background:** The Fos gene family consists of 4 members: FOS, FOSB, FOSL1, and FOSL2. These genes encode leucine zipper proteins that can dimerize with proteins of the JUN family, thereby forming the transcription factor complex AP-1. As such, the FOS proteins have been implicated as regulators of cell proliferation, differentiation, and transformation. In some cases, expression of the FOS gene has also been associated with apoptotic cell death.



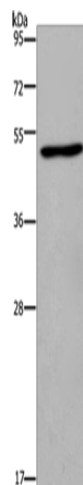
[View online »](#)

**Synonyms:** AP-1; C-FOS; p55

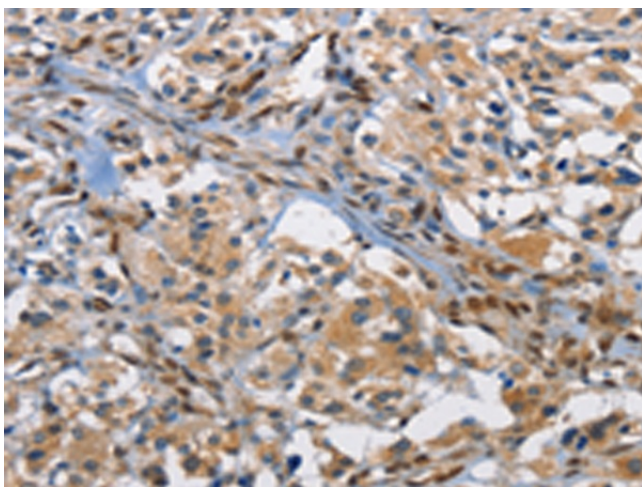
**Protein Families:** Druggable Genome, Transcription Factors

**Protein Pathways:** B cell receptor signaling pathway, Colorectal cancer, MAPK signaling pathway, Pathways in cancer, T cell receptor signaling pathway, Toll-like receptor signaling pathway

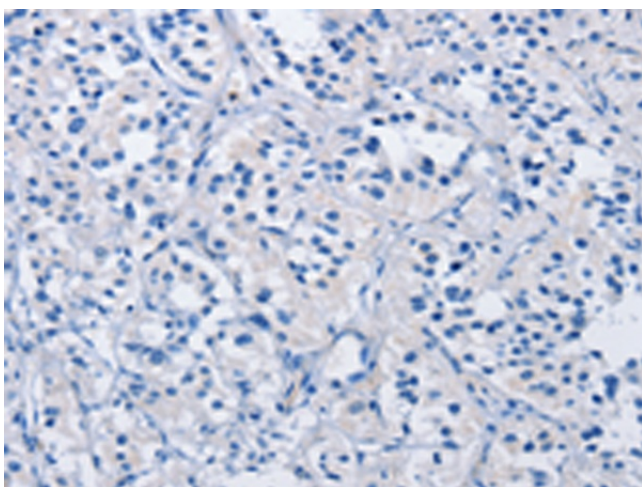
### Product images:



Gel: 10%SDS-PAGE  
Lysate: 40 µg  
Lane: HeLa cells  
Primary antibody: TA349276 (FOS Antibody) at dilution 1/400  
Secondary antibody: Goat anti rabbit IgG at 1/8000 dilution  
Exposure time: 15 seconds



Immunohistochemistry of paraffin-embedded Human thyroid cancer tissue using TA349276 (FOS Antibody) at dilution 1/70 (Original magnification: ×200)



Immunohistochemistry of paraffin-embedded Human thyroid cancer tissue using TA349276 (FOS Antibody) at dilution 1/70, treated with fusion protein. (Original magnification: ×200)