

## Product datasheet for TA349274S

### CEBPE Rabbit Polyclonal Antibody

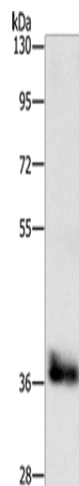
#### Product data:

Product Type:	Primary Antibodies
Applications:	WB
Recommended Dilution:	WB: 200-1000 WB positive control: Mouse liver tissue
Reactivity:	Human, Mouse, Rat
Host:	Rabbit
Isotype:	IgG
Clonality:	Polyclonal
Immunogen:	Fusion protein of human CEBPE
Formulation:	pH7.4 PBS, 0.05% NaN <sub>3</sub> , 40% Glycerol
Purification:	Antigen affinity purification
Conjugation:	Unconjugated
Storage:	Store at -20°C as received.
Stability:	Stable for 12 months from date of receipt.
Predicted Protein Size:	31 kDa
Gene Name:	CCAAT/enhancer binding protein epsilon
Database Link:	<a href="#">NP_001796</a> <a href="#">Entrez Gene 25410 Rat</a> <a href="#">Entrez Gene 110794 Mouse</a> <a href="#">Entrez Gene 1053 Human</a> <a href="#">Q15744</a>
Background:	The protein encoded by this gene is a bZIP transcription factor which can bind as a homodimer to certain DNA regulatory regions. It can also form heterodimers with the related protein CEBP-delta. The encoded protein may be essential for terminal differentiation and functional maturation of committed granulocyte progenitor cells. Mutations in this gene have been associated with Specific Granule Deficiency, a rare congenital disorder. Multiple variants of this gene have been described, but the full-length nature of only one has been determined.
Synonyms:	C; CRP1; EBP-epsilon
Protein Families:	Druggable Genome, Transcription Factors



[View online »](#)

## Product images:



Gel: 10%SDS-PAGE  
Lysate: 40  $\mu$ g  
Lane: Mouse liver tissue  
Primary antibody: [TA349274] (CEBPE Antibody)  
at dilution 1/650  
Secondary antibody: Goat anti rabbit IgG at  
1/8000 dilution  
Exposure time: 30 seconds