

Product datasheet for **TA349273**

CEACAM3 Rabbit Polyclonal Antibody

Product data:

Product Type:	Primary Antibodies
Applications:	IHC, WB
Recommended Dilution:	WB: 200-1000 WB positive control: Human fetal brain tissue and A431 cells IHC: 50-200 Positive control: Human thyroid cancer Predicted cell location: Cytoplasm
Reactivity:	Human
Host:	Rabbit
Isotype:	IgG
Clonality:	Polyclonal
Immunogen:	Fusion protein of human CEACAM3
Formulation:	pH7.4 PBS, 0.05% NaN ₃ , 40% Glycerol
Concentration:	lot specific
Purification:	Antigen affinity purification
Conjugation:	Unconjugated
Storage:	Store at -20°C as received.
Stability:	Stable for 12 months from date of receipt.
Predicted Protein Size:	27 kDa
Gene Name:	carcinoembryonic antigen related cell adhesion molecule 3
Database Link:	NP_001806 Entrez Gene 1084 Human P40198



[View online »](#)

Background:

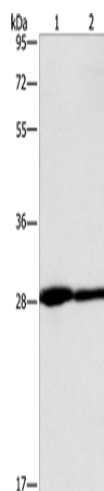
This gene encodes a member of the family of carcinoembryonic antigen-related cell adhesion molecules (CEACAMs), which are used by several bacterial pathogens to bind and invade host cells. The encoded transmembrane protein directs phagocytosis of several bacterial species that is dependent on the small GTPase Rac. It is thought to serve an important role in controlling human-specific pathogens by the innate immune system. Alternatively spliced transcript variants have been described.

Synonyms:

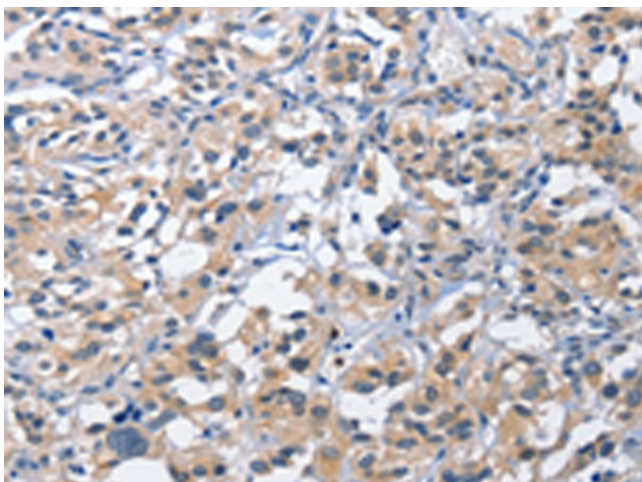
CD66D; CEA; CGM1; W264; W282

Protein Families:

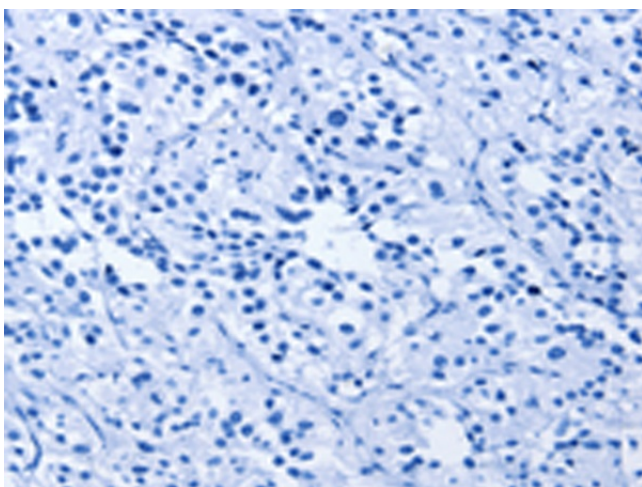
Transmembrane

Product images:

Gel: 10%SDS-PAGE
Lysate: 40 µg
Lane 1-2: Human fetal brain tissue
A431 cells
Primary antibody: TA349273 (CEACAM3 Antibody)
at dilution 1/400
Secondary antibody: Goat anti rabbit IgG at
1/8000 dilution
Exposure time: 1 minute



Immunohistochemistry of paraffin-embedded
Human thyroid cancer tissue using TA349273
(CEACAM3 Antibody) at dilution 1/60 (Original
magnification: ×200)



Immunohistochemistry of paraffin-embedded Human thyroid cancer tissue using TA349273 (CEACAM3 Antibody) at dilution 1/60, treated with fusion protein. (Original magnification: $\times 200$)