

Product datasheet for **TA349272S**

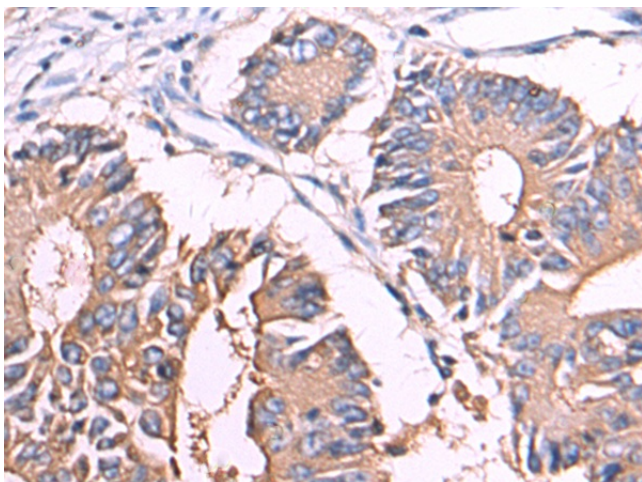
CD66b (CEACAM8) Rabbit Polyclonal Antibody

Product data:

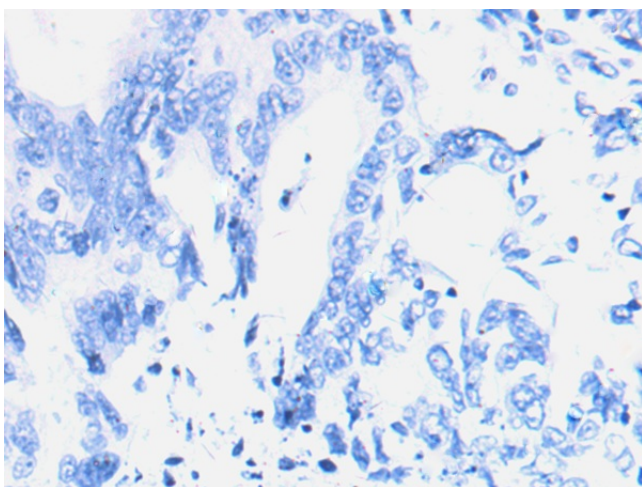
Product Type:	Primary Antibodies
Applications:	IHC
Recommended Dilution:	IHC: 100-300 Positive control: Human colorectal cancer Predicted cell location: Cytoplasm and Cell membrane
Reactivity:	Human
Host:	Rabbit
Isotype:	IgG
Clonality:	Polyclonal
Immunogen:	Fusion protein of human CEACAM8
Formulation:	pH7.4 PBS, 0.05% NaN ₃ , 40% Glycerol
Purification:	Antigen affinity purification
Conjugation:	Unconjugated
Storage:	Store at -20°C as received.
Stability:	Stable for 12 months from date of receipt.
Gene Name:	carcinoembryonic antigen related cell adhesion molecule 8
Database Link:	NP_001807 Entrez Gene 1088 Human P31997
Background:	Carcinoembryonic antigen-related cell adhesion molecule 8 (CEACAM8) also known as CD66b (Cluster of Differentiation 66b), is a human gene. In neutrophils, the CEACAM8 gene is primarily detected in the secondary granules within the cytoplasm, but it can also be found in lower amounts on the plasma membrane. The amount of CD67 on the plasma membrane is up-regulated upon granulocyte activation. CD67 has been located on the surface of neutrophilic and eosinophilic granulocytes at late stages of differentiation.
Synonyms:	CD66b; CD67; CGM6; NCA-95



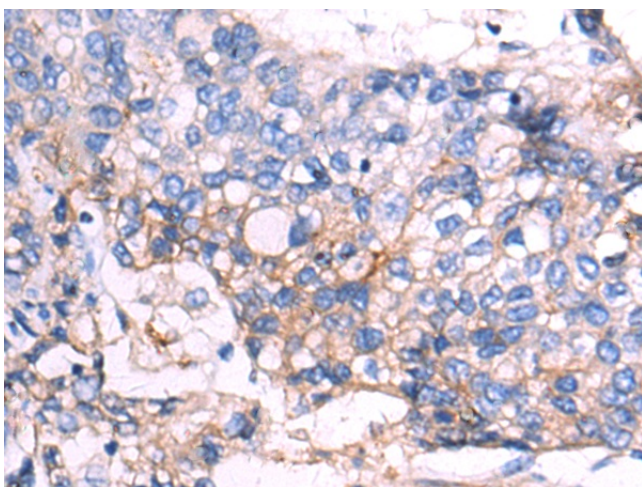
[View online »](#)

Product images:

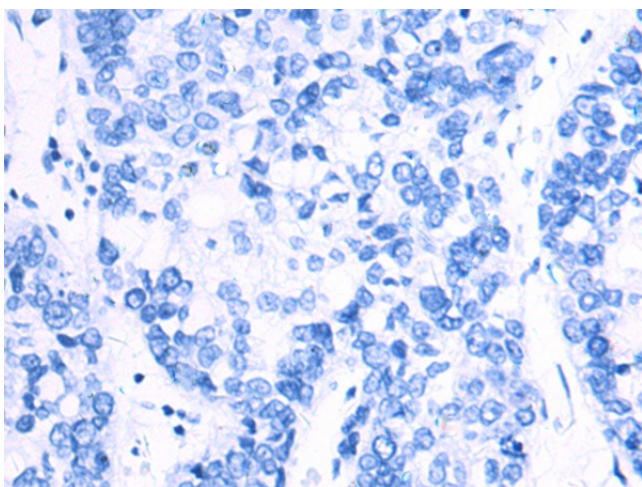
Immunohistochemistry of paraffin-embedded Human colorectal cancer tissue using [TA349272] (CEACAM8 Antibody) at dilution 1/100 (Original magnification: $\times 200$)



Immunohistochemistry of paraffin-embedded Human colorectal cancer tissue using [TA349272] (CEACAM8 Antibody) at dilution 1/100, treated with fusion protein. (Original magnification: $\times 200$)



Immunohistochemistry of paraffin-embedded Human liver cancer tissue using [TA349272] (CEACAM8 Antibody) at dilution 1/100 (Original magnification: ×200)



Immunohistochemistry of paraffin-embedded Human liver cancer tissue using [TA349272] (CEACAM8 Antibody) at dilution 1/100, treated with fusion protein. (Original magnification: ×200)