

## Product datasheet for **TA349267S**

### Exodus 2 (CCL21) Rabbit Polyclonal Antibody

#### Product data:

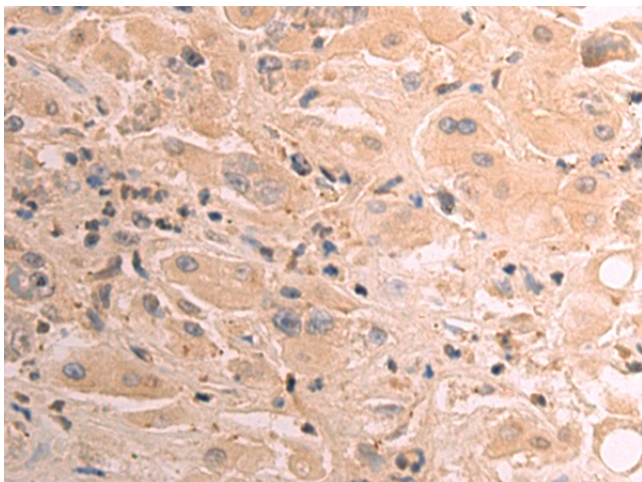
Product Type:	Primary Antibodies
Applications:	IHC
Recommended Dilution:	IHC: 50-200 Positive control: Human liver cancer Predicted cell location: Secreted
Reactivity:	Human
Host:	Rabbit
Isotype:	IgG
Clonality:	Polyclonal
Immunogen:	Fusion protein of human CCL21
Formulation:	pH7.4 PBS, 0.05% NaN3, 40% GlycerolIn
Purification:	Antigen affinity purification
Conjugation:	Unconjugated
Storage:	Store at -20°C as received.
Stability:	Stable for 12 months from date of receipt.
Gene Name:	C-C motif chemokine ligand 21
Database Link:	<a href="#">NP_002980</a> <a href="#">Entrez Gene 6366 Human</a> <a href="#">O00585</a>

**Background:** This gene is one of several CC cytokine genes clustered on the p-arm of chromosome 9. Cytokines are a family of secreted proteins involved in immunoregulatory and inflammatory processes. The CC cytokines are proteins characterized by two adjacent cysteines. Similar to other chemokines the protein encoded by this gene inhibits hemopoiesis and stimulates chemotaxis. This protein is chemotactic in vitro for thymocytes and activated T cells, but not for B cells, macrophages, or neutrophils. The cytokine encoded by this gene may also play a role in mediating homing of lymphocytes to secondary lymphoid organs. It is a high affinity functional ligand for chemokine receptor 7 that is expressed on T and B lymphocytes and a known receptor for another member of the cytokine family (small inducible cytokine A19).

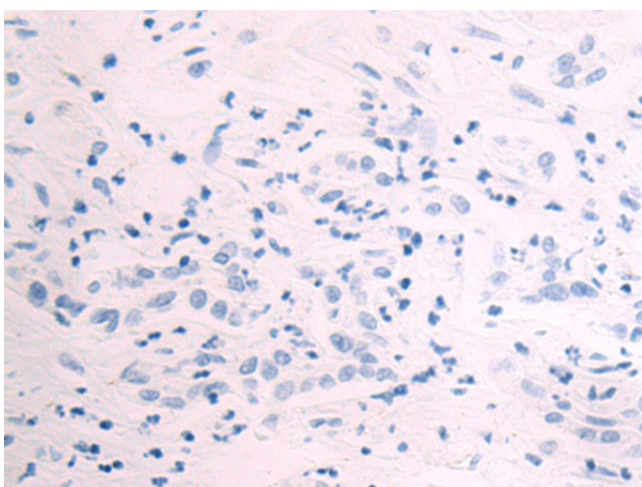


[View online »](#)

**Synonyms:** 6Ckine; CKb9; ECL; SCYA21; SLC; TCA4  
**Protein Families:** Druggable Genome, Secreted Protein  
**Protein Pathways:** Chemokine signaling pathway, Cytokine-cytokine receptor interaction

**Product images:**

Immunohistochemistry of paraffin-embedded Human liver cancer tissue using [TA349267] (CCL21 Antibody) at dilution 1/50 (Original magnification: ×200)



Immunohistochemistry of paraffin-embedded Human liver cancer tissue using [TA349267] (CCL21 Antibody) at dilution 1/50, treated with fusion protein. (Original magnification: ×200)