

Product datasheet for **TA349266**

CBX6 Rabbit Polyclonal Antibody

Product data:

Product Type:	Primary Antibodies
Applications:	WB
Recommended Dilution:	WB: 500-2000 WB positive control: Hela and 293T cells
Reactivity:	Human
Host:	Rabbit
Isotype:	IgG
Clonality:	Polyclonal
Immunogen:	Fusion protein of human CBX6
Formulation:	pH7.4 PBS, 0.05% NaN ₃ , 40% Glycerol
Concentration:	lot specific
Purification:	Antigen affinity purification
Conjugation:	Unconjugated
Storage:	Store at -20°C as received.
Stability:	Stable for 12 months from date of receipt.
Predicted Protein Size:	44 kDa
Gene Name:	chromobox 6
Database Link:	NP_055107 Entrez Gene 23466 Human O95503

Background: CBX6 (chromobox protein homolog 6) is a 412 amino acid protein that is a component of the chromatin-associated PcG complex. Through interaction with PcG, CBX6 modifies chromatin and maintains the transcriptionally repressive state of genes. Members of the chromobox domain protein family are characterized by the presence of a 37 amino acid chromobox (CHRromatin Organization MOdifier) domain. This domain plays a mechanistic role in targeting chromodomain proteins to specific regions of the nucleus.

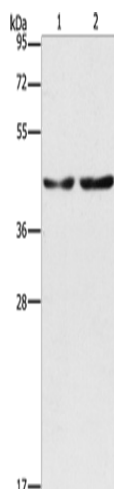
Synonyms: chromobox homolog 6; OTTHUMP00000028667



[View online »](#)

Protein Families: Transcription Factors

Product images:



Gel: 10%SDS-PAGE

Lysate: 40 μ g

Lane 1-2: HeLa cells

293T cells

Primary antibody: TA349266 (CBX6 Antibody) at dilution 1/600

Secondary antibody: Goat anti rabbit IgG at 1/8000 dilution

Exposure time: 40 seconds