

## Product datasheet for **TA349265**

### Cathepsin L (CTSL) Rabbit Polyclonal Antibody

#### Product data:

Product Type:	Primary Antibodies
Applications:	IHC, WB
Recommended Dilution:	WB: 500-2000 WB positive control: Mouse kidney tissue and A172 cells IHC: 50-200 Positive control: Human brain Predicted cell location: Cytoplasm
Reactivity:	Human, Mouse
Host:	Rabbit
Isotype:	IgG
Clonality:	Polyclonal
Immunogen:	Fusion protein of human CTSL
Formulation:	pH7.4 PBS, 0.05% NaN <sub>3</sub> , 40% Glycerol
Concentration:	lot specific
Purification:	Antigen affinity purification
Conjugation:	Unconjugated
Storage:	Store at -20°C as received.
Stability:	Stable for 12 months from date of receipt.
Predicted Protein Size:	38 kDa
Gene Name:	cathepsin L
Database Link:	<a href="#">NP_001903</a> <a href="#">Entrez Gene 13039 Mouse</a> <a href="#">Entrez Gene 1514 Human</a> <a href="#">P07711</a>

**Background:** The protein encoded by this gene is a lysosomal cysteine proteinase that plays a major role in intracellular protein catabolism. Its substrates include collagen and elastin, as well as alpha-1 protease inhibitor, a major controlling element of neutrophil elastase activity. The encoded protein has been implicated in several pathologic processes, including myofibril necrosis in myopathies and in myocardial ischemia, and in the renal tubular response to proteinuria.



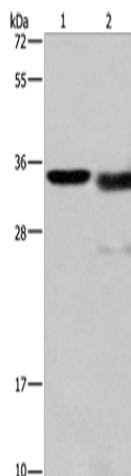
[View online »](#)

**Synonyms:** CATL; CTSL1; MEP

**Protein Families:** Druggable Genome, Protease

**Protein Pathways:** Antigen processing and presentation, Lysosome

**Product images:**



Gel: 15%SDS-PAGE

Lysate: 40  $\mu$ g

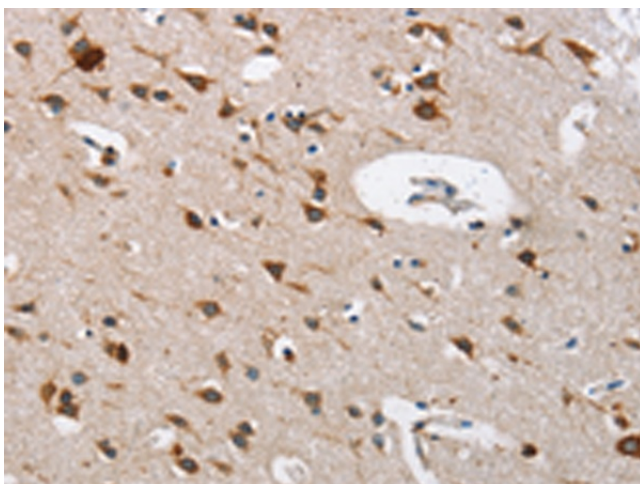
Lane 1-2: Mouse kidney tissue

A172 cells

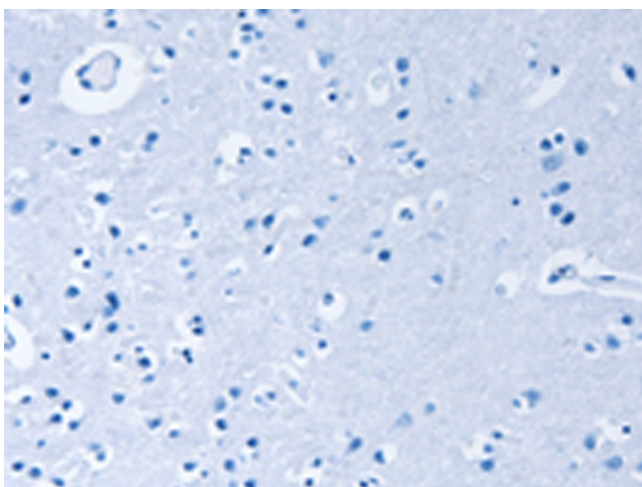
Primary antibody: TA349265 (CTSL Antibody) at dilution 1/900

Secondary antibody: Goat anti rabbit IgG at 1/8000 dilution

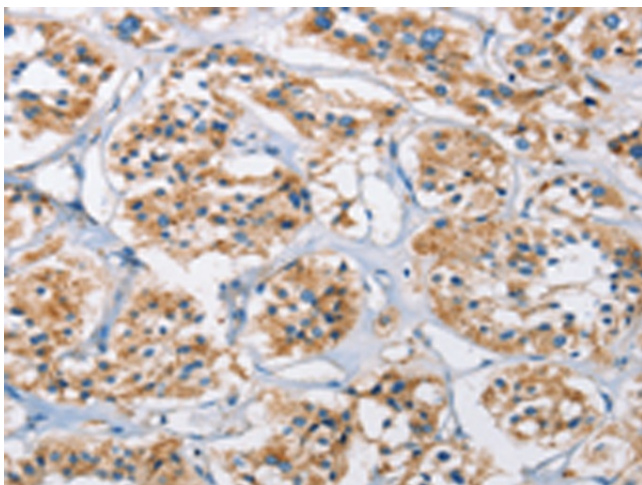
Exposure time: 10 seconds



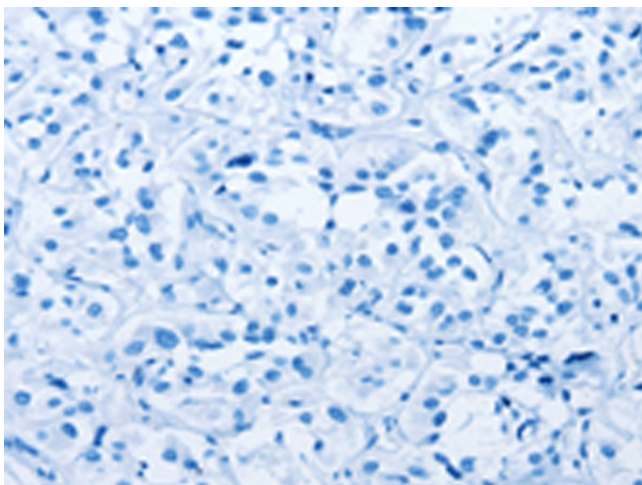
Immunohistochemistry of paraffin-embedded Human brain tissue using TA349265 (CTSL Antibody) at dilution 1/40 (Original magnification:  $\times$ 200)



Immunohistochemistry of paraffin-embedded Human brain tissue using TA349265 (CTSL Antibody) at dilution 1/40, treated with fusion protein. (Original magnification:  $\times 200$ )



Immunohistochemistry of paraffin-embedded Human thyroid cancer tissue using TA349265 (CTSL Antibody) at dilution 1/40 (Original magnification:  $\times 200$ )



Immunohistochemistry of paraffin-embedded Human thyroid cancer tissue using TA349265 (CTSL Antibody) at dilution 1/40, treated with fusion protein. (Original magnification:  $\times 200$ )