

## Product datasheet for **TA349257**

### ORAI1 Rabbit Polyclonal Antibody

#### Product data:

Product Type:	Primary Antibodies
Applications:	IHC, WB
Recommended Dilution:	WB: 200-1000 WB positive control: K562, 231 and SKOV3 cells IHC: 25-100 Positive control: Human liver cancer Predicted cell location: Cytoplasm
Reactivity:	Human
Host:	Rabbit
Isotype:	IgG
Clonality:	Polyclonal
Immunogen:	Fusion protein of human TNFSF13B
Formulation:	pH7.4 PBS, 0.05% NaN <sub>3</sub> , 40% Glycerol
Concentration:	lot specific
Purification:	Antigen affinity purification
Conjugation:	Unconjugated
Storage:	Store at -20°C as received.
Stability:	Stable for 12 months from date of receipt.
Predicted Protein Size:	31 kDa
Gene Name:	ORAI calcium release-activated calcium modulator 1
Database Link:	<a href="#">NP_116179</a> <a href="#">Entrez Gene 84876 Human</a> <a href="#">Q96D31</a>



[View online »](#)

**Background:**

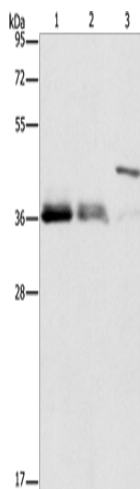
The protein encoded by this gene is a cytokine that belongs to the tumor necrosis factor (TNF) ligand family. This cytokine is a ligand for receptors TNFRSF13B/TACI, TNFRSF17/BCMA, and TNFRSF13C/BAFFR. This cytokine is expressed in B cell lineage cells, and acts as a potent B cell activator. It has been also shown to play an important role in the proliferation and differentiation of B cells. Alternatively spliced transcript variants encoding distinct isoforms have been identified.

**Synonyms:**

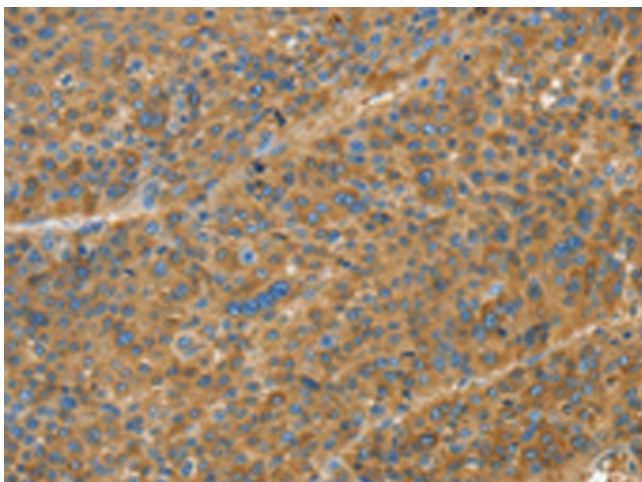
CRACM1; IMD9; ORAT1; TAM2; TMEM142A

**Protein Families:**

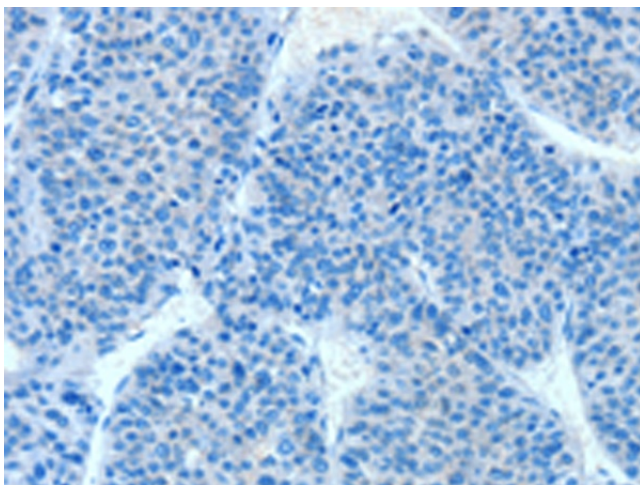
Transmembrane

**Product images:**


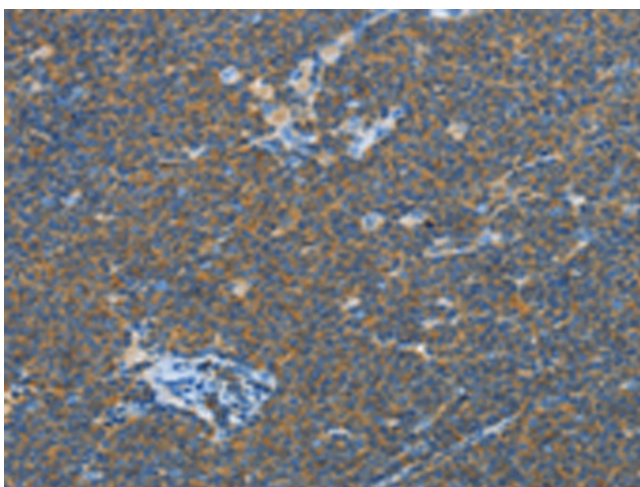
Gel: 10%SDS-PAGE  
 Lysate: 40 µg  
 Lane 1-3: K562 cells  
 231 cells  
 SKOV3 cells  
 Primary antibody: TA349257 (TNFSF13B  
 Antibody) at dilution 1/200  
 Secondary antibody: Goat anti rabbit IgG at  
 1/8000 dilution  
 Exposure time: 10 seconds



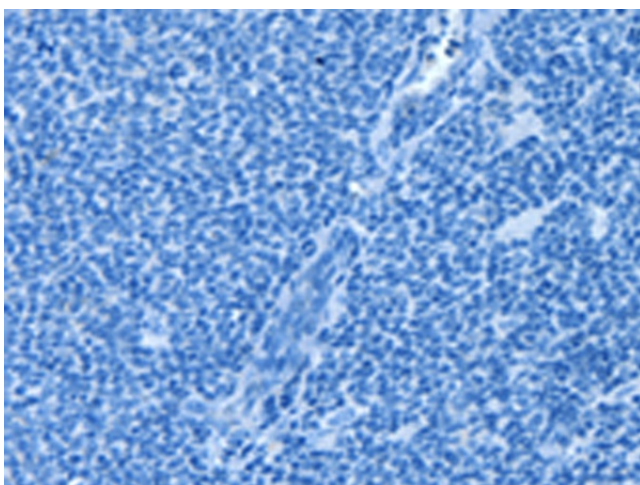
Immunohistochemistry of paraffin-embedded  
 Human liver cancer tissue using TA349257  
 (TNFSF13B Antibody) at dilution 1/20 (Original  
 magnification: ×200)



Immunohistochemistry of paraffin-embedded Human liver cancer tissue using TA349257 (TNFSF13B Antibody) at dilution 1/20, treated with fusion protein. (Original magnification: ×200)



Immunohistochemistry of paraffin-embedded Human lymphoma tissue using TA349257 (TNFSF13B Antibody) at dilution 1/20 (Original magnification: ×200)



Immunohistochemistry of paraffin-embedded Human lymphoma tissue using TA349257 (TNFSF13B Antibody) at dilution 1/20, treated with fusion protein. (Original magnification: ×200)