

Product datasheet for **TA349255S**

TIGAR Rabbit Polyclonal Antibody

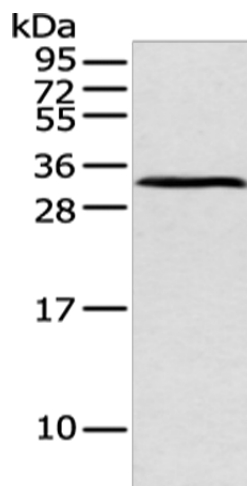
Product data:

Product Type:	Primary Antibodies
Applications:	IHC, WB
Recommended Dilution:	WB: 200-1000 WB positive control: Mouse pancreas tissue IHC: 25-100 Positive control: Human liver cancer Predicted cell location: Cytoplasm
Reactivity:	Human, Mouse, Rat
Host:	Rabbit
Isotype:	IgG
Clonality:	Polyclonal
Immunogen:	Fusion protein of human ATP4B
Formulation:	pH7.4 PBS, 0.05% NaN ₃ , 40% Glycerol
Purification:	Antigen affinity purification
Conjugation:	Unconjugated
Storage:	Store at -20°C as received.
Stability:	Stable for 12 months from date of receipt.
Gene Name:	TP53 induced glycolysis regulatory phosphatase
Database Link:	NP_065108 Entrez Gene 319801 Mouse Entrez Gene 502894 Rat Entrez Gene 57103 Human Q9NQ88
Background:	The protein encoded by this gene belongs to a family of P-type cation-transporting ATPases. The gastric H ⁺ , K ⁺ -ATPase is a heterodimer consisting of a high molecular weight catalytic alpha subunit and a smaller but heavily glycosylated beta subunit. This enzyme is a proton pump that catalyzes the hydrolysis of ATP coupled with the exchange of H ⁽⁺⁾ and K ⁽⁺⁾ ions across the plasma membrane. It is also responsible for gastric acid secretion. This gene encodes the beta subunit of the gastric H ⁺ , K ⁺ -ATPase.
Synonyms:	C12orf5; FR2BP

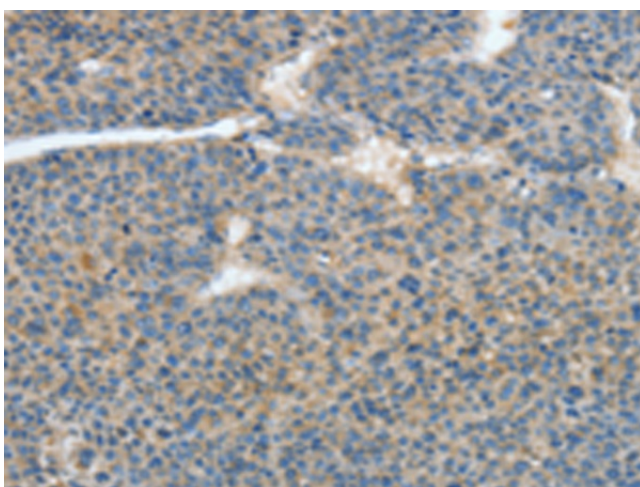


[View online »](#)

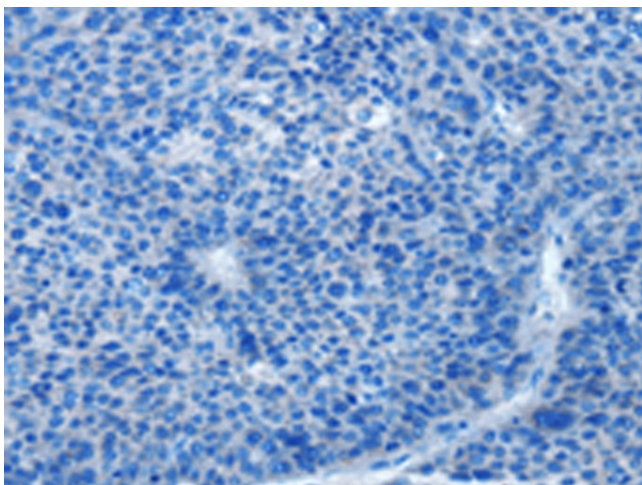
Product images:



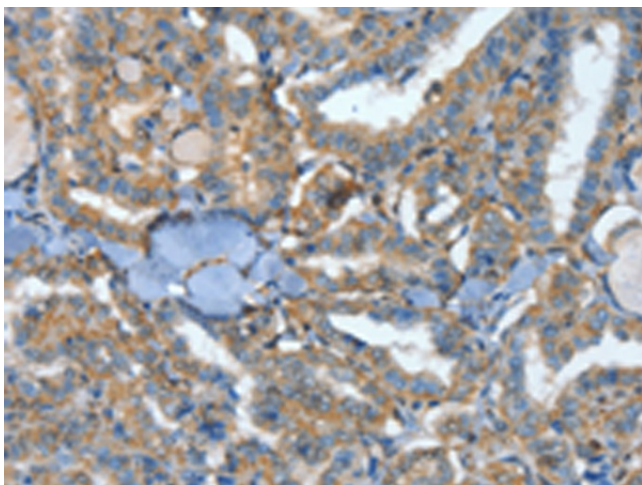
Gel: 12%SDS-PAGE
Lysate: 40 μ g
Lane: Mouse pancreas tissue
Primary antibody: [TA349255] (ATP4B Antibody)
at dilution 1/250
Secondary antibody: Goat anti rabbit IgG at
1/8000 dilution
Exposure time: 1 minute



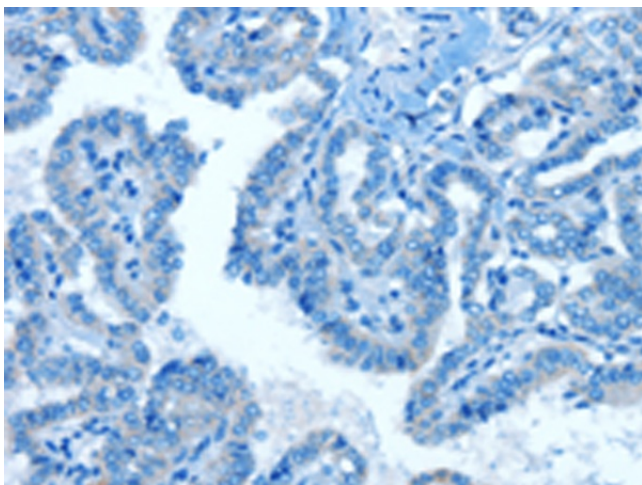
Immunohistochemistry of paraffin-embedded
Human liver cancer tissue using [TA349255]
(ATP4B Antibody) at dilution 1/40 (Original
magnification: \times 200)



Immunohistochemistry of paraffin-embedded Human liver cancer tissue using [TA349255] (ATP4B Antibody) at dilution 1/40, treated with fusion protein. (Original magnification: ×200)



Immunohistochemistry of paraffin-embedded Human thyroid cancer tissue using [TA349255] (ATP4B Antibody) at dilution 1/40 (Original magnification: ×200)



Immunohistochemistry of paraffin-embedded Human thyroid cancer tissue using [TA349255] (ATP4B Antibody) at dilution 1/40, treated with fusion protein. (Original magnification: ×200)