

## Product datasheet for **TA349250**

### AGXT2L2 (PHYKPL) Rabbit Polyclonal Antibody

#### Product data:

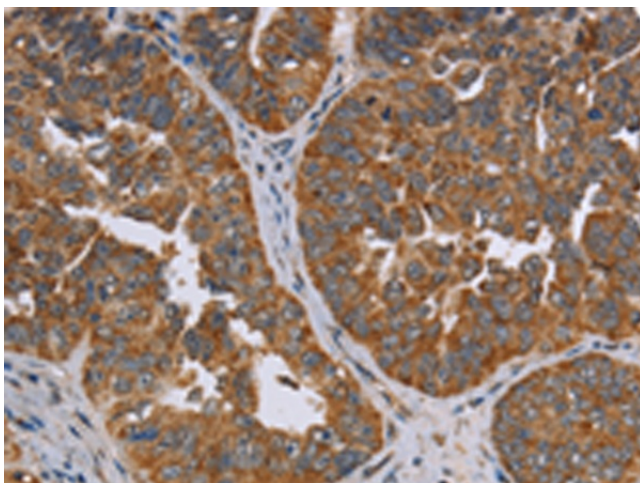
Product Type:	Primary Antibodies
Applications:	IHC
Recommended Dilution:	IHC: 100-300 Positive control: Human ovarian cancer Predicted cell location: Cytoplasm
Reactivity:	Human, Mouse
Host:	Rabbit
Isotype:	IgG
Clonality:	Polyclonal
Immunogen:	Fusion protein of human ADAMTS15
Formulation:	pH7.4 PBS, 0.05% NaN <sub>3</sub> , 40% Glycerol
Concentration:	lot specific
Purification:	Antigen affinity purification
Conjugation:	Unconjugated
Storage:	Store at -20°C as received.
Stability:	Stable for 12 months from date of receipt.
Gene Name:	5-phosphohydroxy-L-lysine phospho-lyase
Database Link:	<a href="#">NP_699204</a> <a href="#">Entrez Gene 72947 Mouse</a> <a href="#">Entrez Gene 85007 Human</a> <a href="#">Q8IUZ5</a>
Background:	This gene encodes a member of the ADAMTS (a disintegrin and metalloproteinase with thrombospondin motifs) protein family. ADAMTS family members share several distinct protein modules, including a propeptide region, a metalloproteinase domain, a disintegrin-like domain, and a thrombospondin type 1 (TS) motif. Individual members of this family differ in the number of C-terminal TS motifs, and some have unique C-terminal domains. The protein encoded by this gene has a high sequence similarity to the proteins encoded by ADAMTS1 and ADAMTS8.
Synonyms:	AGXT2L2; PHLU



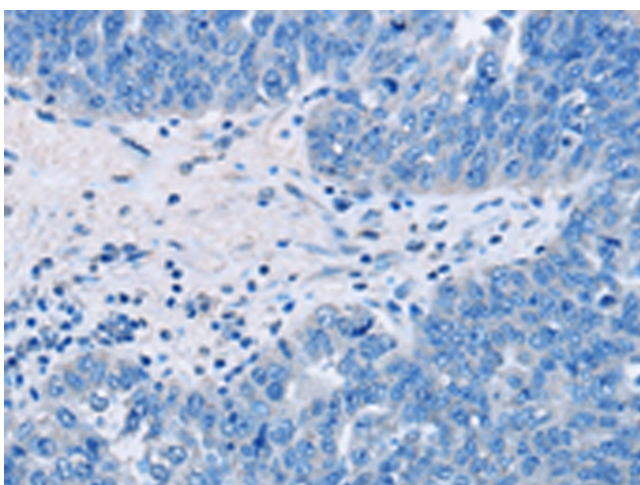
[View online »](#)

Protein Families: Druggable Genome

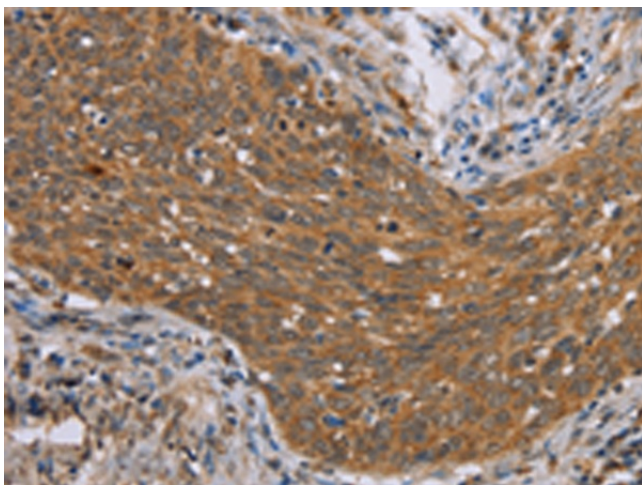
### Product images:



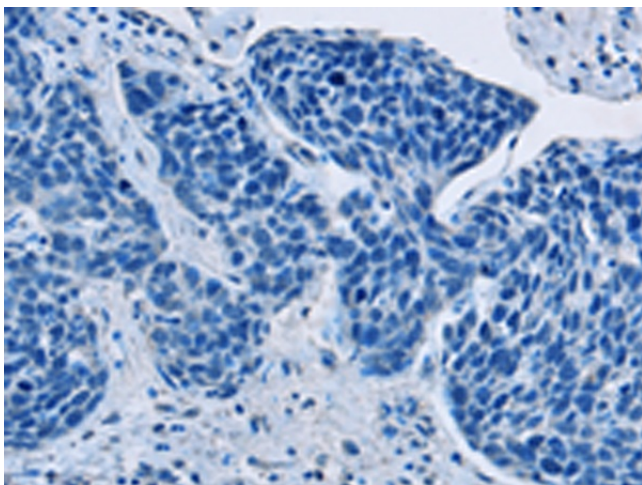
Immunohistochemistry of paraffin-embedded Human ovarian cancer tissue using TA349250 (ADAMTS15 Antibody) at dilution 1/60 (Original magnification:  $\times 200$ )



Immunohistochemistry of paraffin-embedded Human ovarian cancer tissue using TA349250 (ADAMTS15 Antibody) at dilution 1/60, treated with fusion protein. (Original magnification:  $\times 200$ )



Immunohistochemistry of paraffin-embedded Human cervical cancer tissue using TA349250 (ADAMTS15 Antibody) at dilution 1/60 (Original magnification:  $\times 200$ )



Immunohistochemistry of paraffin-embedded Human cervical cancer tissue using TA349250 (ADAMTS15 Antibody) at dilution 1/60, treated with fusion protein. (Original magnification:  $\times 200$ )