

## Product datasheet for **TA349249S**

### Rabbit Monoclonal Antibody

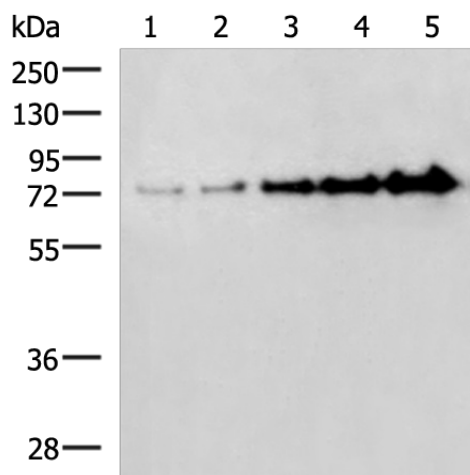
#### Product data:

Product Type:	Primary Antibodies
Applications:	WB
Recommended Dilution:	WB: 1000-5000 WB positive control: BSA protein
Host:	Rabbit
Isotype:	IgG
Clonality:	Monoclonal
Immunogen:	Fusion protein of human BSA
Formulation:	pH7.4 PBS, 0.05% NaN <sub>3</sub> , 40% Glycerol
Purification:	Antigen affinity purification
Conjugation:	Unconjugated
Storage:	Store at -20°C as received.
Stability:	Stable for 12 months from date of receipt.
Predicted Protein Size:	69 kDa
Background:	Serum albumin, the main protein of plasma, has a good binding capacity for water, Ca <sup>2+</sup> , Na <sup>+</sup> , K <sup>+</sup> , fatty acids, hormones, bilirubin and drugs. Its main function is the regulation of the colloidal osmotic pressure of blood. Major zinc transporter in plasma, typically binds about 80% of all plasma zinc.



[View online »](#)

## Product images:



Gel: 8%SDS-PAGE

Lysate: 0.025/0.05/0.1/0.2/0.4  $\mu$ g

Lane 1-5: 0.025/0.05/0.1/0.2/0.4  $\mu$ g BSA protein

Primary antibody: [TA349249] (BSA Antibody) at dilution 1/5000

Secondary antibody: Goat anti rabbit IgG at 1/5000 dilution

Exposure time: 20 seconds