

## Product datasheet for **TA349246S**

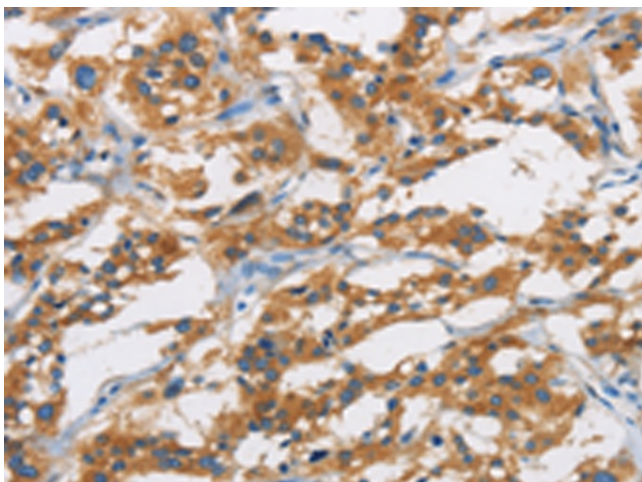
### **SAR1B Rabbit Polyclonal Antibody**

#### **Product data:**

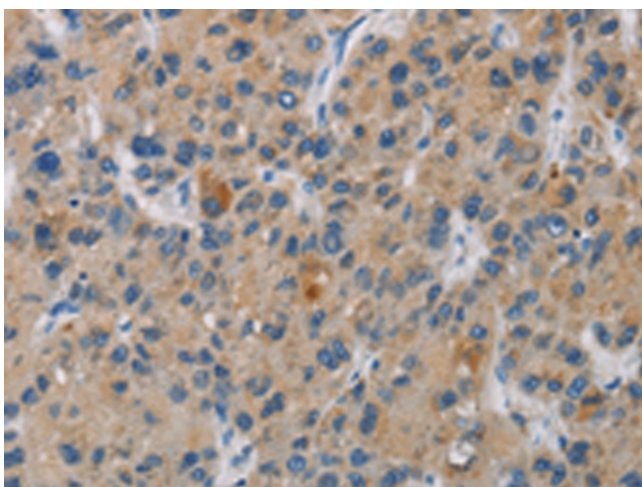
Product Type:	Primary Antibodies
Applications:	IHC
Recommended Dilution:	IHC: 25-100 Positive control: Human thyroid cancer Predicted cell location: Cytoplasm
Reactivity:	Human, Mouse, Rat
Host:	Rabbit
Isotype:	IgG
Clonality:	Polyclonal
Immunogen:	Fusion protein of human SAR1B
Formulation:	pH7.4 PBS, 0.05% NaN3, 40% GlycerolIn
Purification:	Antigen affinity purification
Conjugation:	Unconjugated
Storage:	Store at -20°C as received.
Stability:	Stable for 12 months from date of receipt.
Gene Name:	secretion associated Ras related GTPase 1B
Database Link:	<a href="#">NP_057187</a> <a href="#">Entrez Gene 66397 Mouse</a> <a href="#">Entrez Gene 287276 Rat</a> <a href="#">Entrez Gene 51128 Human</a> <a href="#">Q9Y6B6</a>
Background:	The protein encoded by this gene is a small GTPase that acts as a homodimer. The encoded protein is activated by the guanine nucleotide exchange factor PREB and is involved in protein transport from the endoplasmic reticulum to the Golgi. This protein is part of the COPII coat complex. Defects in this gene are a cause of chylomicron retention disease (CMRD), also known as Anderson disease (ANDD). Two transcript variants encoding the same protein have been found for this gene.
Synonyms:	ANDD; CMRD; GTBPB; SARA2



[View online »](#)

**Product images:**

Immunohistochemistry of paraffin-embedded Human thyroid cancer tissue using [TA349246] (SAR1B Antibody) at dilution 1/20. (Original magnification: ×200)



Immunohistochemistry of paraffin-embedded Human liver cancer tissue using [TA349246] (SAR1B Antibody) at dilution 1/20. (Original magnification: ×200)