

Product datasheet for **TA349245**

ARF6 Rabbit Polyclonal Antibody

Product data:

Product Type:	Primary Antibodies
Applications:	IHC, WB
Recommended Dilution:	WB: 200-1000 WB positive control: A431 cells and human liver cancer tissue, 231 cells and human fetal liver tissue IHC: 25-100 Positive control: Human gastric cancer Predicted cell location: Cytoplasm
Reactivity:	Human, Mouse, Rat
Host:	Rabbit
Isotype:	IgG
Clonality:	Polyclonal
Immunogen:	Fusion protein of human ARF6
Formulation:	pH7.4 PBS, 0.05% NaN ₃ , 40% Glycerol
Concentration:	lot specific
Purification:	Antigen affinity purification
Conjugation:	Unconjugated
Storage:	Store at -20°C as received.
Stability:	Stable for 12 months from date of receipt.
Predicted Protein Size:	20 kDa
Gene Name:	ADP ribosylation factor 6
Database Link:	NP_001654 Entrez Gene 11845 Mouse Entrez Gene 79121 Rat Entrez Gene 382 Human P62330



[View online »](#)

Background:

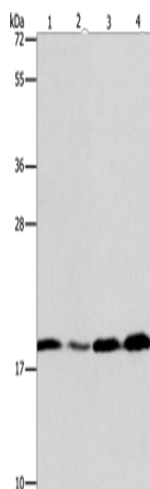
This gene encodes a member of the human ARF gene family, which is part of the RAS superfamily. The ARF genes encode small guanine nucleotide-binding proteins that stimulate the ADP-ribosyltransferase activity of cholera toxin and play a role in vesicular trafficking and as activators of phospholipase D. The product of this gene is localized to the plasma membrane, and regulates vesicular trafficking, remodelling of membrane lipids, and signaling pathways that lead to actin remodeling. A pseudogene of this gene is located on chromosome 7.

Synonyms:

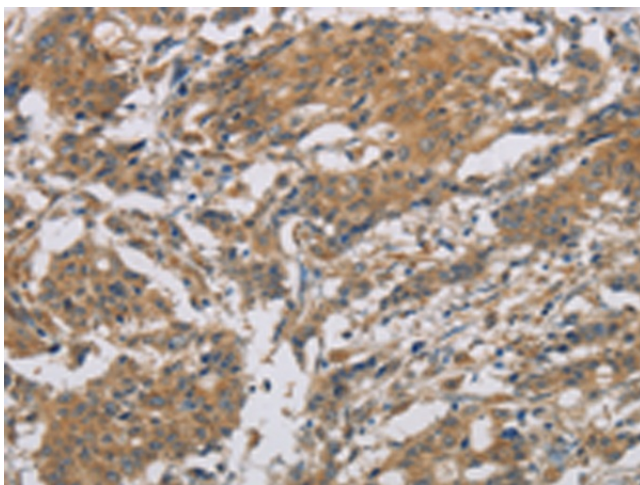
DKFZp564M0264

Protein Pathways:

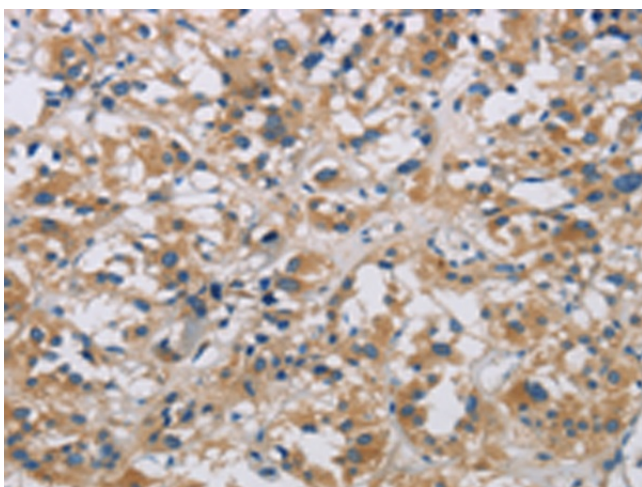
Endocytosis, Fc gamma R-mediated phagocytosis

Product images:

Gel: 10%SDS-PAGE
Lysate: 40 µg
Lane 1-4: A431 cells
human liver cancer tissue
231 cells
human fetal liver tissue
Primary antibody: TA349245 (ARF6 Antibody) at dilution 1/200
Secondary antibody: Goat anti rabbit IgG at 1/8000 dilution
Exposure time: 20 seconds



Immunohistochemistry of paraffin-embedded Human gastric cancer tissue using TA349245 (ARF6 Antibody) at dilution 1/20. (Original magnification: ×200)



Immunohistochemistry of paraffin-embedded Human thyroid cancer tissue using TA349245 (ARF6 Antibody) at dilution 1/20. (Original magnification: x200)