

## Product datasheet for **TA349238S**

### Cytokeratin 8 (KRT8) Rabbit Polyclonal Antibody

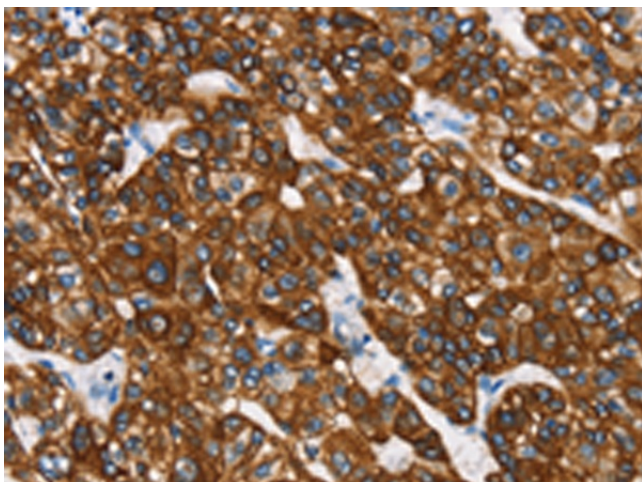
#### Product data:

Product Type:	Primary Antibodies
Applications:	IHC
Recommended Dilution:	IHC: 50-200 Positive control: Human liver cancer Predicted cell location: Cell membrane and Cytoplasm
Reactivity:	Human, Mouse, Rat
Host:	Rabbit
Isotype:	IgG
Clonality:	Polyclonal
Immunogen:	Fusion protein of human KRT8
Formulation:	pH7.4 PBS, 0.05% NaN <sub>3</sub> , 40% Glycerol
Purification:	Antigen affinity purification
Conjugation:	Unconjugated
Storage:	Store at -20°C as received.
Stability:	Stable for 12 months from date of receipt.
Gene Name:	keratin 8
Database Link:	<a href="#">NP_002264</a> <a href="#">Entrez Gene 16691 Mouse</a> <a href="#">Entrez Gene 25626 Rat</a> <a href="#">Entrez Gene 3856 Human</a> <a href="#">P05787</a>
Background:	This gene is a member of the type II keratin family clustered on the long arm of chromosome 12. Type I and type II keratins heteropolymerize to form intermediate-sized filaments in the cytoplasm of epithelial cells. The product of this gene typically dimerizes with keratin 18 to form an intermediate filament in simple single-layered epithelial cells. This protein plays a role in maintaining cellular structural integrity and also functions in signal transduction and cellular differentiation. Mutations in this gene cause cryptogenic cirrhosis. Alternatively spliced transcript variants have been found for this gene.
Synonyms:	CARD2; CK-8; CK8; CYK8; K2C8; K8; KO
Protein Families:	Druggable Genome

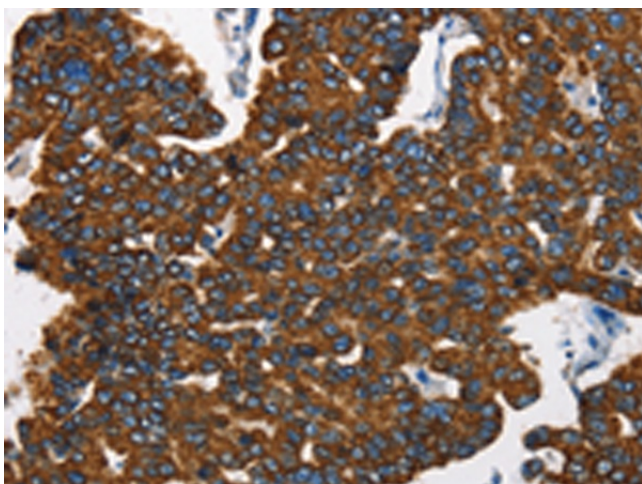


[View online »](#)

## Product images:



Immunohistochemistry of paraffin-embedded Human liver cancer tissue using [TA349238] (KRT8 Antibody) at dilution 1/40. (Original magnification: ×200)



Immunohistochemistry of paraffin-embedded Human breast cancer tissue using [TA349238] (KRT8 Antibody) at dilution 1/40. (Original magnification: ×200)