

Product datasheet for **TA349237**

Annexin A13 (ANXA13) Rabbit Polyclonal Antibody

Product data:

Product Type:	Primary Antibodies
Applications:	IHC, WB
Recommended Dilution:	WB: 500-2000 WB positive control: Rat skeletal muscle tissue lysate IHC: 100-300 Positive control: Human liver cancer Predicted cell location: Cell membrane and Cytoplasm
Reactivity:	Human, Mouse, Rat
Host:	Rabbit
Isotype:	IgG
Clonality:	Polyclonal
Immunogen:	Fusion protein of human ANXA13
Formulation:	pH7.4 PBS, 0.05% NaN ₃ , 40% Glycerol
Concentration:	lot specific
Purification:	Antigen affinity purification
Conjugation:	Unconjugated
Storage:	Store at -20°C as received.
Stability:	Stable for 12 months from date of receipt.
Predicted Protein Size:	35 kDa
Gene Name:	annexin A13
Database Link:	NP_004297 Entrez Gene 69787 Mouse Entrez Gene 362915 Rat Entrez Gene 312 Human P27216



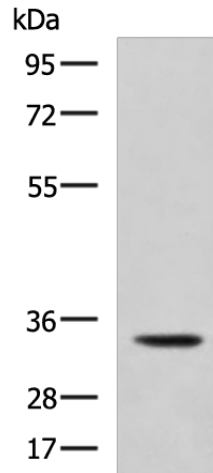
[View online »](#)

Background:

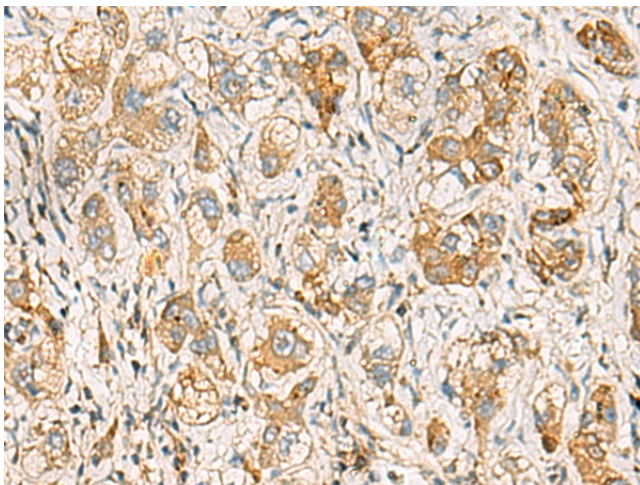
This gene encodes a member of the annexin family. Members of this calcium-dependent phospholipid-binding protein family play a role in the regulation of cellular growth and in signal transduction pathways. The specific function of this gene has not yet been determined; however, it is associated with the plasma membrane of undifferentiated, proliferating endothelial cells and differentiated villus enterocytes. Alternatively spliced transcript variants encoding different isoforms have been identified.

Synonyms:

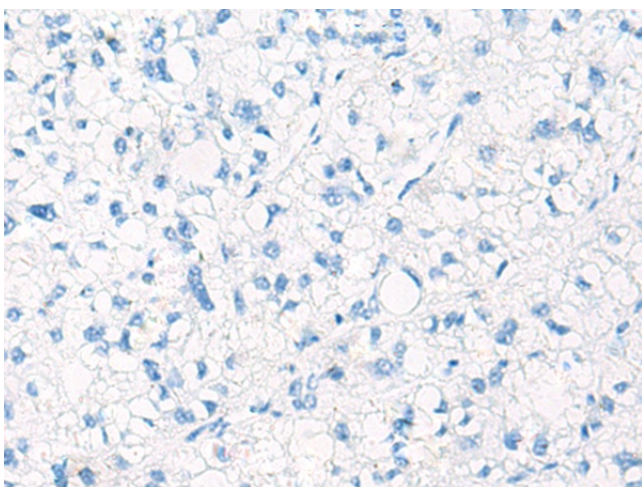
ANX13; ISA

Product images:


Gel: 8%SDS-PAGE
 Lysate: 40 µg
 Lane: Rat skeletal muscle tissue lysate
 Primary antibody: TA349237 (ANXA13 Antibody) at dilution 1/800
 Secondary antibody: Goat anti rabbit IgG at 1/5000 dilution
 Exposure time: 5 seconds



Immunohistochemistry of paraffin-embedded Human liver cancer tissue using TA349237 (ANXA13 Antibody) at dilution 1/90 (Original magnification: ×200)



Immunohistochemistry of paraffin-embedded Human liver cancer tissue using TA349237 (ANXA13 Antibody) at dilution 1/90, treated with fusion protein. (Original magnification: ×200)