

## Product datasheet for **TA349236S**

### Annexin IV (ANXA4) Rabbit Polyclonal Antibody

#### Product data:

Product Type:	Primary Antibodies
Applications:	IHC, WB
Recommended Dilution:	WB: 500-2000 WB positive control: Raw264.7 cells and human fetal liver tissue IHC: 25-100 Positive control: Human gastric cancer Predicted cell location: Cytoplasm
Reactivity:	Human, Mouse, Rat
Host:	Rabbit
Isotype:	IgG
Clonality:	Polyclonal
Immunogen:	Fusion protein of human ANXA4
Formulation:	pH7.4 PBS, 0.05% NaN <sub>3</sub> , 40% Glycerol
Purification:	Antigen affinity purification
Conjugation:	Unconjugated
Storage:	Store at -20°C as received.
Stability:	Stable for 12 months from date of receipt.
Predicted Protein Size:	36 kDa
Gene Name:	annexin A4
Database Link:	<a href="#">NP_001144</a> <a href="#">Entrez Gene 11746 MouseEntrez Gene 79124 RatEntrez Gene 307 Human P09525</a>



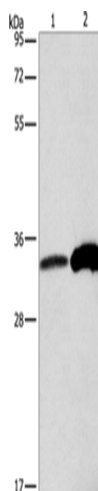
[View online »](#)

**Background:**

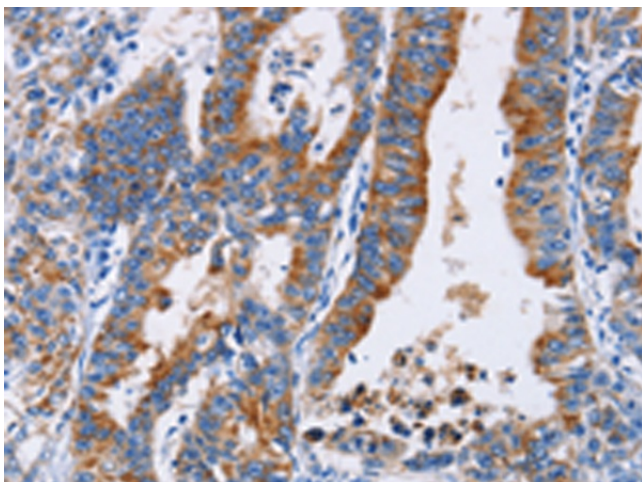
Annexin IV (ANX4) belongs to the annexin family of calcium-dependent phospholipid binding proteins. Although their functions are still not clearly defined, several members of the annexin family have been implicated in membrane-related events along exocytotic and endocytotic pathways. ANX4 has 45 to 59% identity with other members of its family and shares a similar size and exon-intron organization. Isolated from human placenta, ANX4 encodes a protein that has possible interactions with ATP, and has in vitro anticoagulant activity and also inhibits phospholipase A2 activity. ANX4 is almost exclusively expressed in epithelial cells.

**Synonyms:**

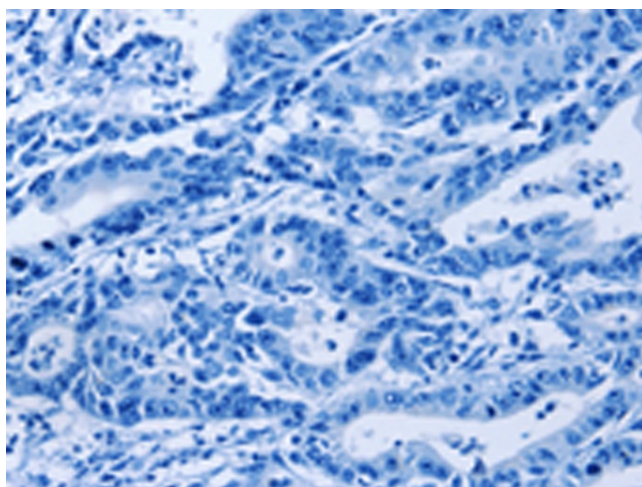
ANX4; HEL-S-274; PIG28; ZAP36

**Product images:**


Gel: 8%SDS-PAGE  
 Lysate: 40 µg  
 Lane 1-2: Raw264.7 cells  
 human fetal liver tissue  
 Primary antibody: [TA349236] (ANXA4 Antibody)  
 at dilution 1/500  
 Secondary antibody: Goat anti rabbit IgG at  
 1/8000 dilution  
 Exposure time: 3 seconds



Immunohistochemistry of paraffin-embedded  
 Human gastric cancer tissue using [TA349236]  
 (ANXA4 Antibody) at dilution 1/25 (Original  
 magnification: ×200)



Immunohistochemistry of paraffin-embedded Human gastric cancer tissue using [TA349236] (ANXA4 Antibody) at dilution 1/25, treated with fusion protein. (Original magnification:  $\times 200$ )