

Product datasheet for **TA349233**

c Abl (ABL1) Rabbit Polyclonal Antibody

Product data:

Product Type:	Primary Antibodies
Applications:	IHC
Recommended Dilution:	IHC: 50-200 Positive control: Human brain Predicted cell location: Cytoplasm
Reactivity:	Human, Mouse
Host:	Rabbit
Isotype:	IgG
Clonality:	Polyclonal
Immunogen:	Fusion protein of human ABL1
Formulation:	pH7.4 PBS, 0.05% NaN3, 40% GlycerolIn
Concentration:	lot specific
Purification:	Antigen affinity purification
Conjugation:	Unconjugated
Storage:	Store at -20°C as received.
Stability:	Stable for 12 months from date of receipt.
Gene Name:	ABL proto-oncogene 1, non-receptor tyrosine kinase
Database Link:	NP_009297 Entrez Gene 11350 Mouse Entrez Gene 25 Human P00519

Background: The ABL1 protooncogene encodes a cytoplasmic and nuclear protein tyrosine kinase that has been implicated in processes of cell differentiation, cell division, cell adhesion, and stress response. Activity of c-Abl protein is negatively regulated by its SH3 domain, and deletion of the SH3 domain turns ABL1 into an oncogene. The t(9;22) translocation results in the head-to-tail fusion of the BCR (MIM:151410) and ABL1 genes present in many cases of chronic myelogenous leukemia. The DNA-binding activity of the ubiquitously expressed ABL1 tyrosine kinase is regulated by CDC2-mediated phosphorylation, suggesting a cell cycle function for ABL1.



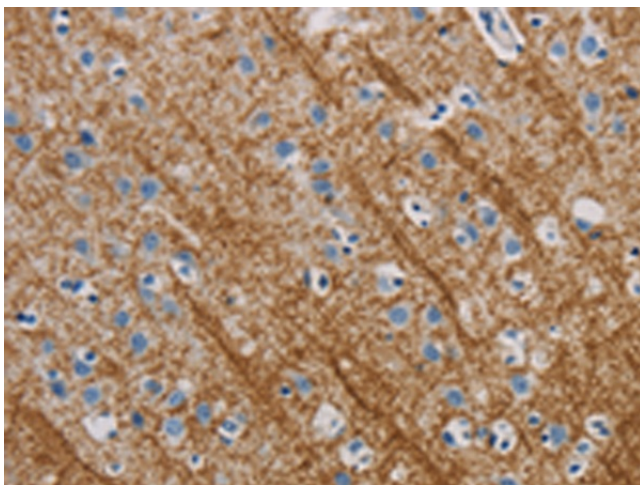
[View online »](#)

Synonyms: ABL; abl; bcr; c-ABL; c-ABL1; JTK7; p150; v-abl

Protein Families: Druggable Genome, Protein Kinase, Transcription Factors

Protein Pathways: Axon guidance, Cell cycle, Chronic myeloid leukemia, ErbB signaling pathway, Neurotrophin signaling pathway, Pathogenic Escherichia coli infection, Pathways in cancer, Viral myocarditis

Product images:



Immunohistochemistry of paraffin-embedded Human brain tissue using TA349233 (ABL1 Antibody) at dilution 1/40. (Original magnification: ×200)