

## Product datasheet for TA349232

### IL20 Receptor alpha (IL20RA) Rabbit Polyclonal Antibody

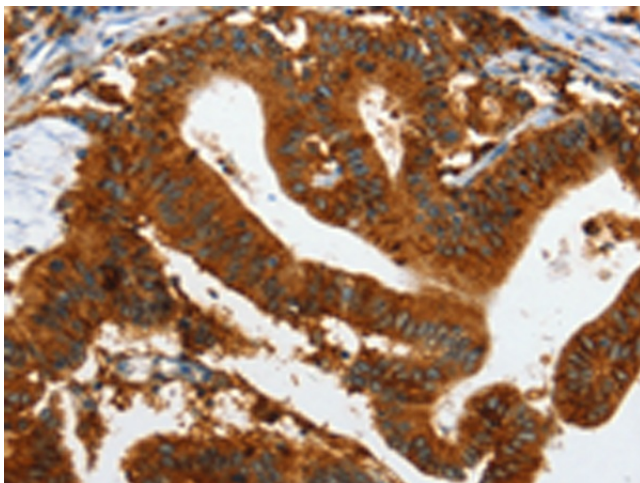
#### Product data:

Product Type:	Primary Antibodies
Applications:	IHC
Recommended Dilution:	IHC: 50-200 Positive control: Human colon cancer Predicted cell location: Cytoplasm
Reactivity:	Human, Mouse
Host:	Rabbit
Isotype:	IgG
Clonality:	Polyclonal
Immunogen:	Fusion protein of human IL20RA
Formulation:	pH7.4 PBS, 0.05% NaN <sub>3</sub> , 40% Glycerol
Concentration:	lot specific
Purification:	Antigen affinity purification
Conjugation:	Unconjugated
Storage:	Store at -20°C as received.
Stability:	Stable for 12 months from date of receipt.
Gene Name:	interleukin 20 receptor subunit alpha
Database Link:	<a href="#">NP_055247</a> <a href="#">Entrez Gene 237313 Mouse</a> <a href="#">Entrez Gene 53832 Human</a> <a href="#">Q9UHF4</a>
Background:	The protein encoded by this gene is a receptor for interleukin 20 (IL20), a cytokine that may be involved in epidermal function. The receptor of IL20 is a heterodimeric receptor complex consisting of this protein and interleukin 20 receptor beta (IL20B). This gene and IL20B are highly expressed in skin. The expression of both genes is found to be upregulated in Psoriasis.
Synonyms:	CRF2-8; IL-20R-alpha; IL-20R1; IL-20RA
Protein Families:	Druggable Genome, Transmembrane

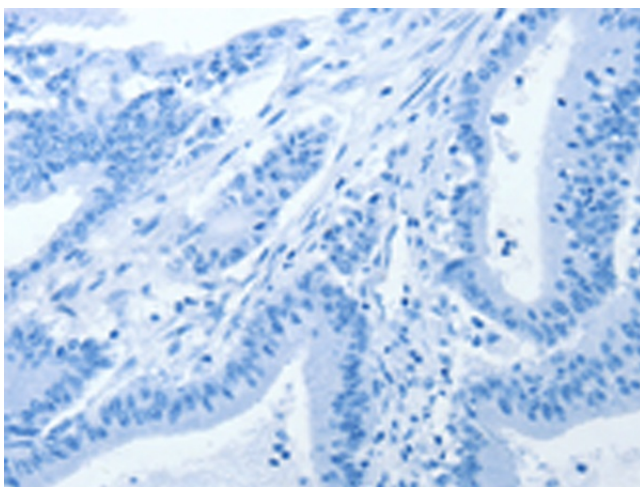

[View online »](#)

**Protein Pathways:** Cytokine-cytokine receptor interaction, Jak-STAT signaling pathway

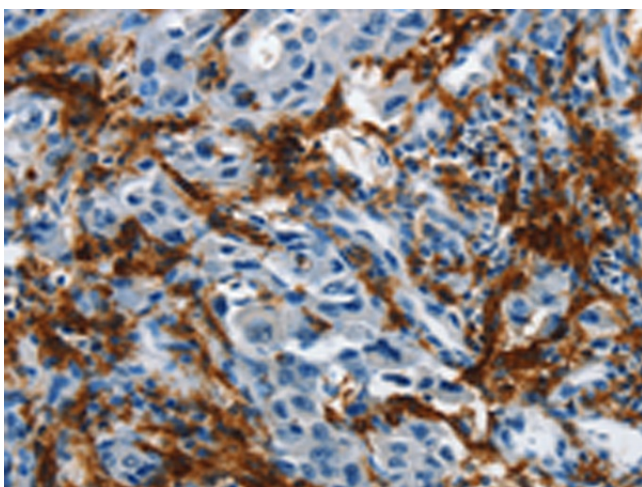
**Product images:**



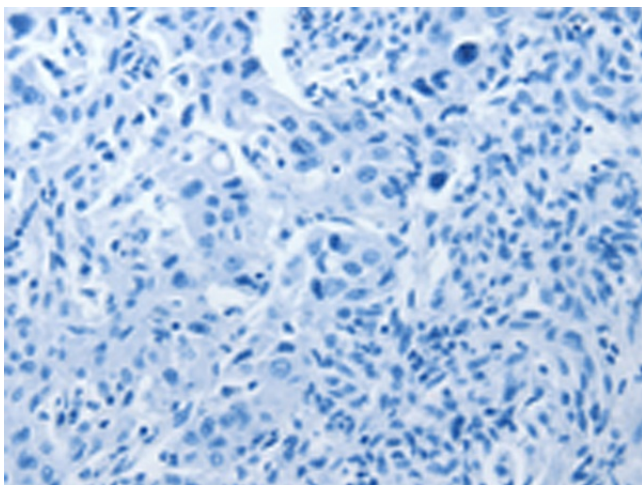
Immunohistochemistry of paraffin-embedded Human colon cancer tissue using TA349232 (IL20RA Antibody) at dilution 1/35 (Original magnification: ×200)



Immunohistochemistry of paraffin-embedded Human colon cancer tissue using TA349232 (IL20RA Antibody) at dilution 1/35, treated with fusion protein. (Original magnification: ×200)



Immunohistochemistry of paraffin-embedded Human lung cancer tissue using TA349232 (IL20RA Antibody) at dilution 1/35 (Original magnification: ×200)



Immunohistochemistry of paraffin-embedded Human lung cancer tissue using TA349232 (IL20RA Antibody) at dilution 1/35, treated with fusion protein. (Original magnification: ×200)