

Product datasheet for **TA349225**

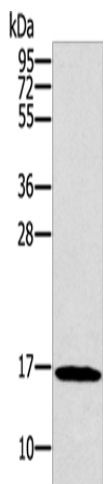
gamma Synuclein (SNCG) Rabbit Polyclonal Antibody

Product data:

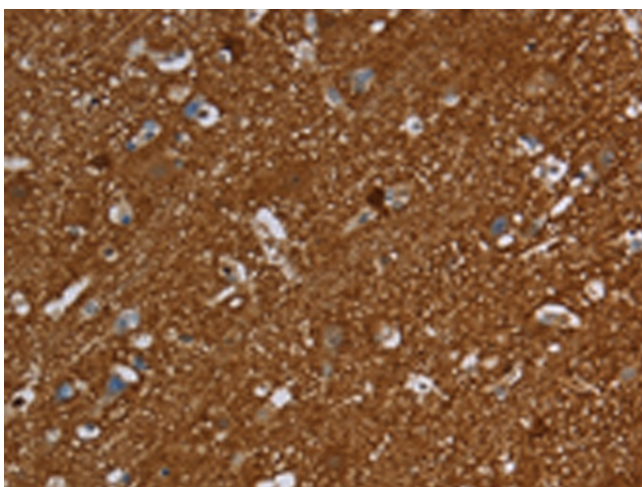
Product Type:	Primary Antibodies
Applications:	IHC, WB
Recommended Dilution:	WB: 500-2000 WB positive control: HT-29 cells IHC: 100-300 Positive control: Human brain Predicted cell location: Cytoplasm
Reactivity:	Human
Host:	Rabbit
Isotype:	IgG
Clonality:	Polyclonal
Immunogen:	Fusion protein of human SNCG
Formulation:	pH7.4 PBS, 0.05% NaN ₃ , 40% Glycerol
Concentration:	lot specific
Purification:	Antigen affinity purification
Conjugation:	Unconjugated
Storage:	Store at -20°C as received.
Stability:	Stable for 12 months from date of receipt.
Predicted Protein Size:	13 kDa
Gene Name:	synuclein gamma
Database Link:	NP_003078 Entrez Gene 6623 Human O76070
Background:	This gene encodes a member of the synuclein family of proteins which are believed to be involved in the pathogenesis of neurodegenerative diseases. Mutations in this gene have also been associated with breast tumor development.
Synonyms:	BCSG1; SR



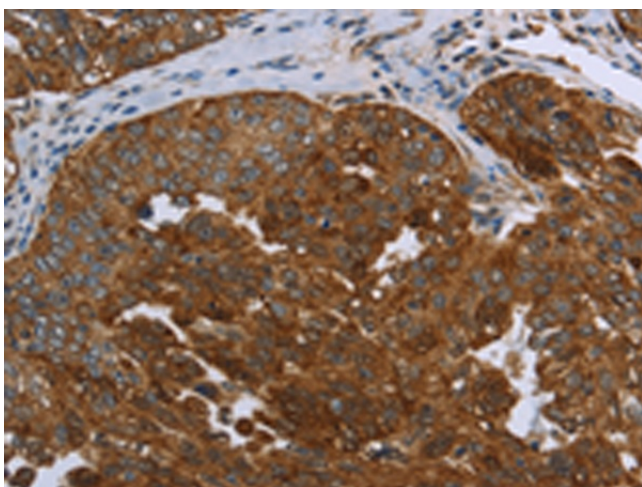
[View online »](#)

Product images:

Gel: 12%SDS-PAGE
Lysate: 40 µg
Lane: HT29 cells
Primary antibody: TA349225 (SNCG Antibody) at dilution 1/800
Secondary antibody: Goat anti rabbit IgG at 1/8000 dilution
Exposure time: 20 seconds



Immunohistochemistry of paraffin-embedded Human brain tissue using TA349225 (SNCG Antibody) at dilution 1/60. (Original magnification: ×200)



Immunohistochemistry of paraffin-embedded Human ovarian cancer tissue using TA349225 (SNCG Antibody) at dilution 1/60. (Original magnification: ×200)