

Product datasheet for **TA349222**

MMP9 Rabbit Polyclonal Antibody

Product data:

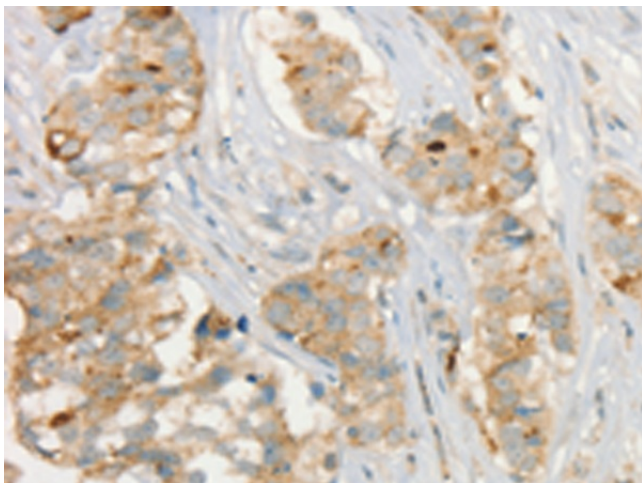
Product Type:	Primary Antibodies
Applications:	IHC
Recommended Dilution:	IHC: 25-100 Positive control: Human breast cancer Predicted cell location: Cytoplasm
Reactivity:	Human
Host:	Rabbit
Isotype:	IgG
Clonality:	Polyclonal
Immunogen:	Fusion protein of human MMP9
Formulation:	pH7.4 PBS, 0.05% NaN ₃ , 40% Glycerol
Concentration:	lot specific
Purification:	Antigen affinity purification
Conjugation:	Unconjugated
Storage:	Store at -20°C as received.
Stability:	Stable for 12 months from date of receipt.
Gene Name:	matrix metalloproteinase 9
Database Link:	NP_004985 Entrez Gene 4318 Human P14780
Background:	Proteins of the matrix metalloproteinase (MMP) family are involved in the breakdown of extracellular matrix in normal physiological processes, such as embryonic development, reproduction, and tissue remodeling, as well as in disease processes, such as arthritis and metastasis. Most MMP's are secreted as inactive proproteins which are activated when cleaved by extracellular proteinases.
Synonyms:	CLG4B; GELB; MANDP2; MMP-9
Protein Families:	Druggable Genome, Protease



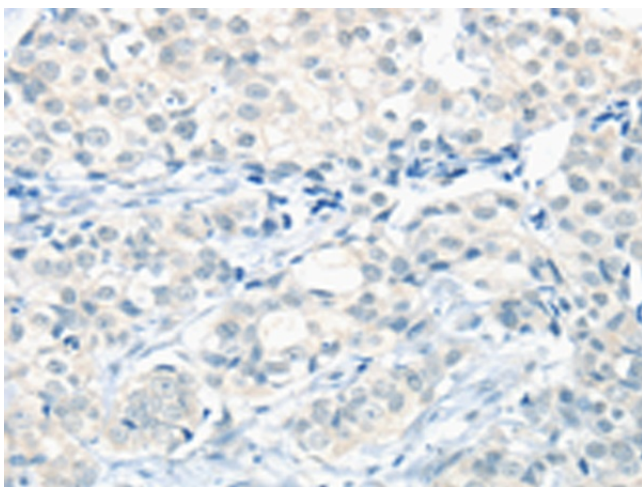
[View online »](#)

Protein Pathways: Bladder cancer, Leukocyte transendothelial migration, Pathways in cancer

Product images:



Immunohistochemistry of paraffin-embedded Human breast cancer tissue using TA349222 (MMP9 Antibody) at dilution 1/20 (Original magnification: $\times 200$)



Immunohistochemistry of paraffin-embedded Human breast cancer tissue using TA349222 (MMP9 Antibody) at dilution 1/20, treated with fusion protein. (Original magnification: $\times 200$)