

## Product datasheet for **TA349218**

### c-Jun (JUN) Rabbit Polyclonal Antibody

#### Product data:

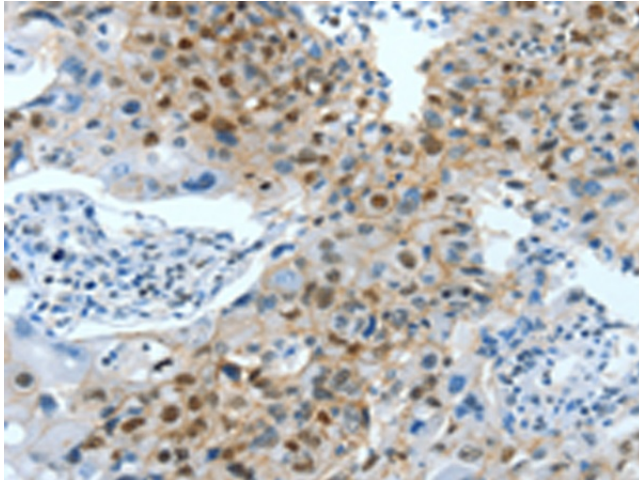
Product Type:	Primary Antibodies
Applications:	IHC
Recommended Dilution:	IHC: 25-100 Positive control: Human lung cancer Predicted cell location: Nucleus
Reactivity:	Human, Mouse, Rat
Host:	Rabbit
Isotype:	IgG
Clonality:	Polyclonal
Immunogen:	Fusion protein of human JUN
Formulation:	pH7.4 PBS, 0.05% NaN <sub>3</sub> , 40% Glycerol
Concentration:	lot specific
Purification:	Antigen affinity purification
Conjugation:	Unconjugated
Storage:	Store at -20°C as received.
Stability:	Stable for 12 months from date of receipt.
Gene Name:	Jun proto-oncogene, AP-1 transcription factor subunit
Database Link:	<a href="#">NP_002219</a> <a href="#">Entrez Gene 16476 Mouse</a> <a href="#">Entrez Gene 24516 Rat</a> <a href="#">Entrez Gene 3725 Human</a> <a href="#">P05412</a>
Background:	This gene is the putative transforming gene of avian sarcoma virus 17. It encodes a protein which is highly similar to the viral protein, and which interacts directly with specific target DNA sequences to regulate gene expression. This gene is intronless and is mapped to 1p32-p31, a chromosomal region involved in both translocations and deletions in human malignancies.
Synonyms:	AP-1; AP1; c-Jun
Protein Families:	Druggable Genome, ES Cell Differentiation/IPS, Transcription Factors



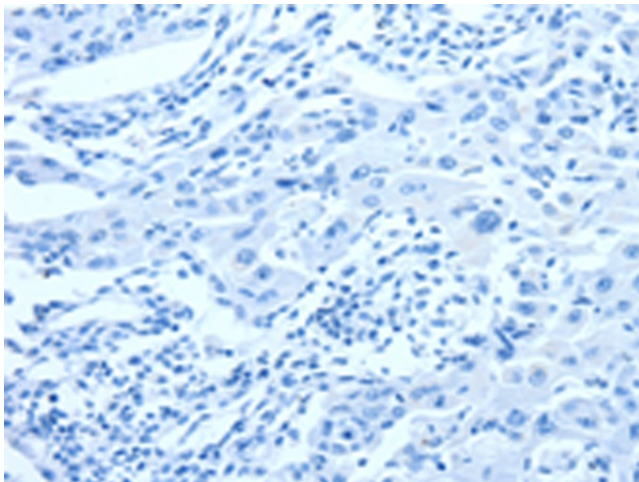
[View online »](#)

**Protein Pathways:**

B cell receptor signaling pathway, Colorectal cancer, Epithelial cell signaling in Helicobacter pylori infection, ErbB signaling pathway, Focal adhesion, GnRH signaling pathway, MAPK signaling pathway, Neurotrophin signaling pathway, Pathways in cancer, Renal cell carcinoma, T cell receptor signaling pathway, Toll-like receptor signaling pathway, Wnt signaling pathway

**Product images:**

Immunohistochemistry of paraffin-embedded Human lung cancer tissue using TA349218 (JUN Antibody) at dilution 1/30 (Original magnification: ×200)



Immunohistochemistry of paraffin-embedded Human lung cancer tissue using TA349218 (JUN Antibody) at dilution 1/30, treated with fusion protein. (Original magnification: ×200)