

## Product datasheet for **TA349217**

### Angiogenin (ANG) Rabbit Polyclonal Antibody

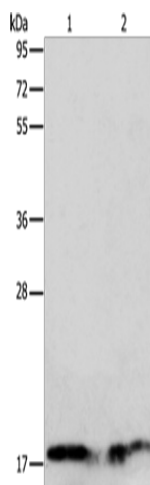
#### Product data:

Product Type:	Primary Antibodies
Applications:	WB
Recommended Dilution:	WB: 200-1000 WB positive control: Human normal liver and fetal liver tissue
Reactivity:	Human
Host:	Rabbit
Isotype:	IgG
Clonality:	Polyclonal
Immunogen:	Fusion protein of human ANG
Formulation:	pH7.4 PBS, 0.05% NaN <sub>3</sub> , 40% Glycerol
Concentration:	lot specific
Purification:	Antigen affinity purification
Conjugation:	Unconjugated
Storage:	Store at -20°C as received.
Stability:	Stable for 12 months from date of receipt.
Predicted Protein Size:	17 kDa
Gene Name:	angiogenin
Database Link:	<a href="#">NP_001136</a> <a href="#">Entrez Gene 283 Human</a> <a href="#">P03950</a>
Background:	The protein encoded by this gene is an exceedingly potent mediator of new blood vessel formation. It hydrolyzes cellular tRNAs resulting in decreased protein synthesis and is similar to pancreatic ribonuclease. Alternative splicing results in two transcript variants encoding the same protein. This gene and the gene that encodes ribonuclease, RNase A family, 4 share promoters and 5' exons. Each gene splices to a unique downstream exon that contains its complete coding region.
Synonyms:	ALS9; HEL168; RAA1; RNASE4; RNASE5

[View online »](#)

Protein Families: Druggable Genome, Secreted Protein, Transmembrane

## Product images:



Gel: 12%SDS-PAGE  
 Lysate: 40 µg  
 Lane 1-2: Human normal liver tissue  
 Human fetal liver tissue  
 Primary antibody: TA349217 (ANG Antibody) at  
 dilution 1/133  
 Secondary antibody: Goat anti rabbit IgG at  
 1/8000 dilution  
 Exposure time: 20 seconds