

Product datasheet for **TA349216S**

RBM1A1 Rabbit Polyclonal Antibody

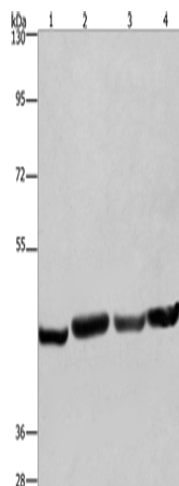
Product data:

| | |
|-------------------------|---|
| Product Type: | Primary Antibodies |
| Applications: | WB |
| Recommended Dilution: | WB: 500-2000 WB positive control: A549, HeLa, PC3 and HepG2 cells |
| Reactivity: | Human |
| Host: | Rabbit |
| Isotype: | IgG |
| Clonality: | Polyclonal |
| Immunogen: | Fusion protein of human RBM1A1 |
| Formulation: | pH7.4 PBS, 0.05% NaN ₃ , 40% Glycerol |
| Purification: | Antigen affinity purification |
| Conjugation: | Unconjugated |
| Storage: | Store at -20°C as received. |
| Stability: | Stable for 12 months from date of receipt. |
| Predicted Protein Size: | 56 kDa |
| Gene Name: | RNA binding motif protein, Y-linked, family 1, member A1 |
| Database Link: | NP_005049 Entrez Gene 5940 Human P0DJD3 |
| Background: | This gene encodes a protein containing an RNA-binding motif in the N-terminus and four SRGY (serine, arginine, glycine, tyrosine) boxes in the C-terminus. Multiple copies of this gene are found in the AZFb azoospermia factor region of chromosome Y and the encoded protein is thought to be involved in spermatogenesis. Most copies of this locus are pseudogenes, although six highly similar copies have full-length ORFs and are considered functional. Four functional copies of this gene are found within inverted repeat IR2; two functional copies of this gene are found in palindrome P3, along with two copies of PTPN13-like, Y-linked. |
| Synonyms: | RBM; RBM1; RBM2; RBM3; RBM4; RBM5; RBM6; RBM7; RBM8; RBM9; RBM10; RBM11; RBM12; RBM13; RBM14; RBM15; RBM16; RBM17; RBM18; RBM19; RBM20; RBM21; RBM22; RBM23; RBM24; RBM25; RBM26; RBM27; RBM28; RBM29; RBM30; RBM31; RBM32; RBM33; RBM34; RBM35; RBM36; RBM37; RBM38; RBM39; RBM40; RBM41; RBM42; RBM43; RBM44; RBM45; RBM46; RBM47; RBM48; RBM49; RBM50; RBM51; RBM52; RBM53; RBM54; RBM55; RBM56; RBM57; RBM58; RBM59; RBM60; RBM61; RBM62; RBM63; RBM64; RBM65; RBM66; RBM67; RBM68; RBM69; RBM70; RBM71; RBM72; RBM73; RBM74; RBM75; RBM76; RBM77; RBM78; RBM79; RBM80; RBM81; RBM82; RBM83; RBM84; RBM85; RBM86; RBM87; RBM88; RBM89; RBM90; RBM91; RBM92; RBM93; RBM94; RBM95; RBM96; RBM97; RBM98; RBM99; RBM100 |



[View online »](#)

Product images:



Gel: 6%SDS-PAGE
Lysate: 40 μ g
Lane 1-4: A549 cells
Hela cells
PC3 cells
HepG2 cells
Primary antibody: [TA349216] (RBMY1A1 Antibody) at dilution 1/360
Secondary antibody: Goat anti rabbit IgG at 1/8000 dilution
Exposure time: 30 seconds