

## Product datasheet for **TA349216**

### **RBM1A1 Rabbit Polyclonal Antibody**

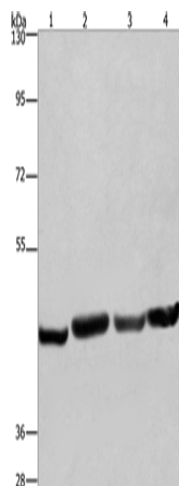
#### **Product data:**

Product Type:	Primary Antibodies
Applications:	WB
Recommended Dilution:	WB: 500-2000 WB positive control: A549, HeLa, PC3 and HepG2 cells
Reactivity:	Human
Host:	Rabbit
Isotype:	IgG
Clonality:	Polyclonal
Immunogen:	Fusion protein of human RBM1A1
Formulation:	pH7.4 PBS, 0.05% NaN <sub>3</sub> , 40% Glycerol
Concentration:	lot specific
Purification:	Antigen affinity purification
Conjugation:	Unconjugated
Storage:	Store at -20°C as received.
Stability:	Stable for 12 months from date of receipt.
Predicted Protein Size:	56 kDa
Gene Name:	RNA binding motif protein, Y-linked, family 1, member A1
Database Link:	<a href="#">NP_005049</a> <a href="#">Entrez Gene 5940 Human</a> <a href="#">P0DJD3</a>
Background:	This gene encodes a protein containing an RNA-binding motif in the N-terminus and four SRGY (serine, arginine, glycine, tyrosine) boxes in the C-terminus. Multiple copies of this gene are found in the AZFb azoospermia factor region of chromosome Y and the encoded protein is thought to be involved in spermatogenesis. Most copies of this locus are pseudogenes, although six highly similar copies have full-length ORFs and are considered functional. Four functional copies of this gene are found within inverted repeat IR2; two functional copies of this gene are found in palindrome P3, along with two copies of PTPN13-like, Y-linked.
Synonyms:	RBM; RBM1; RBM2; RBMY; RBMY1C; YRRM1; YRRM2



[View online »](#)

## Product images:



Gel: 6%SDS-PAGE

Lysate: 40  $\mu$ g

Lane 1-4: A549 cells

Hela cells

PC3 cells

HepG2 cells

Primary antibody: TA349216 (RBMV1A1 Antibody)  
at dilution 1/360

Secondary antibody: Goat anti rabbit IgG at  
1/8000 dilution

Exposure time: 30 seconds