

Product datasheet for **TA349215**

RAGE (AGER) Rabbit Polyclonal Antibody

Product data:

| | |
|-------------------------|--|
| Product Type: | Primary Antibodies |
| Applications: | IHC, WB |
| Recommended Dilution: | ELISA: 2000-5000, WB: 500-2000, IHC: 100-300 |
| Reactivity: | Human |
| Host: | Rabbit |
| Isotype: | IgG |
| Clonality: | Polyclonal |
| Immunogen: | Fusion protein of human AGER |
| Formulation: | pH7.4 PBS, 0.05% NaN ₃ , 40% Glycerol |
| Concentration: | lot specific |
| Purification: | Antigen affinity purification |
| Conjugation: | Unconjugated |
| Storage: | Store at -20°C as received. |
| Stability: | Stable for 12 months from date of receipt. |
| Predicted Protein Size: | 43 kDa |
| Gene Name: | advanced glycosylation end product-specific receptor |
| Database Link: | NP_001127 Entrez Gene 177 Human Q15109 |

Background: The advanced glycosylation end product (AGE) receptor encoded by this gene is a member of the immunoglobulin superfamily of cell surface receptors. It is a multiligand receptor, and besides AGE, interacts with other molecules implicated in homeostasis, development, and inflammation, and certain diseases, such as diabetes and Alzheimer's disease. Many alternatively spliced transcript variants encoding different isoforms, as well as non-protein-coding variants, have been described for this gene.

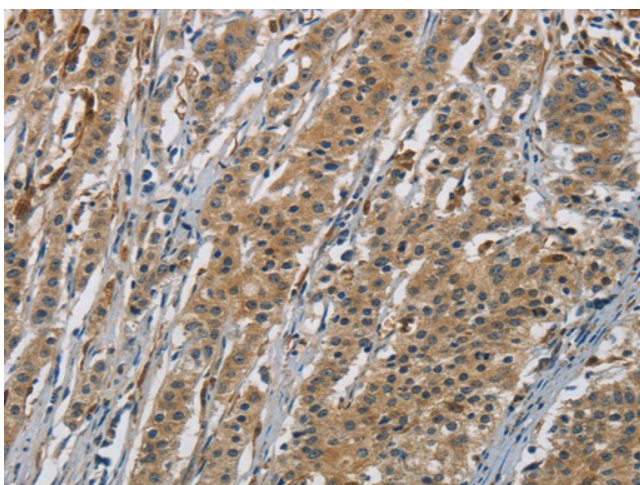
Synonyms: RAGE
Protein Families: Druggable Genome, Secreted Protein, Transmembrane



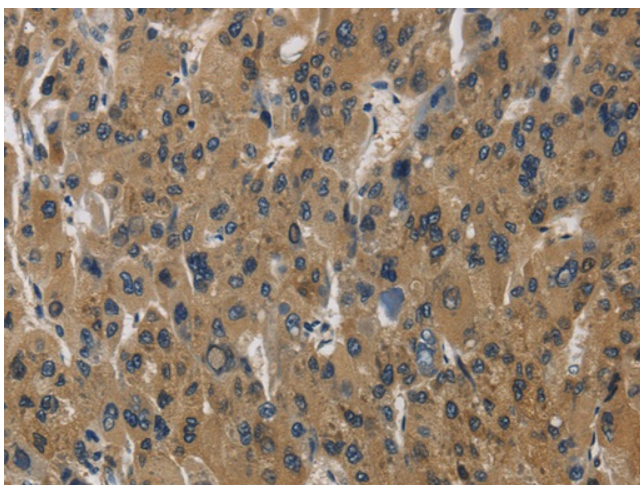
[View online »](#)

Product images:

Gel: 8%SDS-PAGE, Lysate: 40 ug, Primary antibody: (AGER Antibody) at dilution 1/750 dilution, Secondary antibody: Goat anti rabbit IgG at 1/8000 dilution, Exposure time: 2 minutes



The image is immunohistochemistry of paraffin-embedded Human gastric cancer tissue using (AGER Antibody) at dilution 1/70. (Original magnification: ×200)



The image is immunohistochemistry of paraffin-embedded Human liver cancer tissue using (AGER Antibody) at dilution 1/70. (Original magnification: ×200)