

Product datasheet for **TA349210S**

HSP90AA1 Rabbit Polyclonal Antibody

Product data:

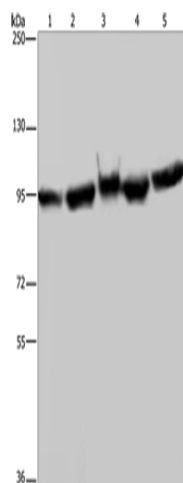
Product Type:	Primary Antibodies
Applications:	WB
Recommended Dilution:	WB: 500-2000 WB positive control: A549 and 293T cells, mouse brain tissue, K562 and Hela cells
Reactivity:	Human, Mouse, Rat
Host:	Rabbit
Isotype:	IgG
Clonality:	Polyclonal
Immunogen:	Fusion protein of human HSP90AA1
Formulation:	pH7.4 PBS, 0.05% NaN ₃ , 40% Glycerol
Purification:	Antigen affinity purification
Conjugation:	Unconjugated
Storage:	Store at -20°C as received.
Stability:	Stable for 12 months from date of receipt.
Predicted Protein Size:	85 kDa
Gene Name:	heat shock protein 90kDa alpha family class A member 1
Database Link:	NP_001017963 Entrez Gene 15519 Mouse Entrez Gene 299331 Rat Entrez Gene 3320 Human P07900
Background:	The protein encoded by this gene is an inducible molecular chaperone that functions as a homodimer. The encoded protein aids in the proper folding of specific target proteins by use of an ATPase activity that is modulated by co-chaperones. Two transcript variants encoding different isoforms have been found for this gene
Synonyms:	EL52; HSP86; Hsp89; HSP89A; Hsp90; HSP90A; HSP90N; HSPC1; HSPCA; HSPCAL1; HSPCAL4; HSPN; LAP-2; LAP2
Protein Families:	Druggable Genome



[View online »](#)

Protein Pathways:

Antigen processing and presentation, NOD-like receptor signaling pathway, Pathways in cancer, Progesterone-mediated oocyte maturation, Prostate cancer

Product images:

Gel: 6%SDS-PAGE

Lysate: 40 µg

Lane 1-5: A549 cells

293T cells

mouse brain tissue

K562 cells

HeLa cells

Primary antibody: [TA349210] (HSP90AA1

Antibody) at dilution 1/350

Secondary antibody: Goat anti rabbit IgG at

1/8000 dilution

Exposure time: 5 seconds