

Product datasheet for **TA349209**

CEACAM5 Rabbit Polyclonal Antibody

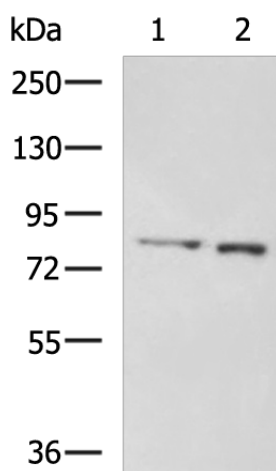
Product data:

Product Type:	Primary Antibodies
Applications:	IHC, WB
Recommended Dilution:	WB: 500-2000 WB positive control: Hela and HepG2 cell lysates IHC: 25-50 Positive control: Human brain Predicted cell location: Cytoplasm
Reactivity:	Human, Mouse
Host:	Rabbit
Isotype:	IgG
Clonality:	Polyclonal
Immunogen:	Fusion protein of human CEACAM5
Formulation:	pH7.4 PBS, 0.05% NaN ₃ , 40% Glycerol
Concentration:	lot specific
Purification:	Antigen affinity purification
Conjugation:	Unconjugated
Storage:	Store at -20°C as received.
Stability:	Stable for 12 months from date of receipt.
Predicted Protein Size:	77 kDa
Gene Name:	carcinoembryonic antigen related cell adhesion molecule 5
Database Link:	NP_004354 Entrez Gene 73250 Mouse Entrez Gene 1048 Human P06731
Background:	Carcinoembryonic antigen-related cell adhesion molecule 5(CEACAM5) also known as CD66e(Cluster of Differentiation 66e), is a human gene. Members of the CEACAM subfamily, including CEACAM5, belong to the CEA gene family. CD66E is a well known tumor marker and a heavily glycosylated GPI-linked cell surface molecule.
Synonyms:	CD66e; CEA

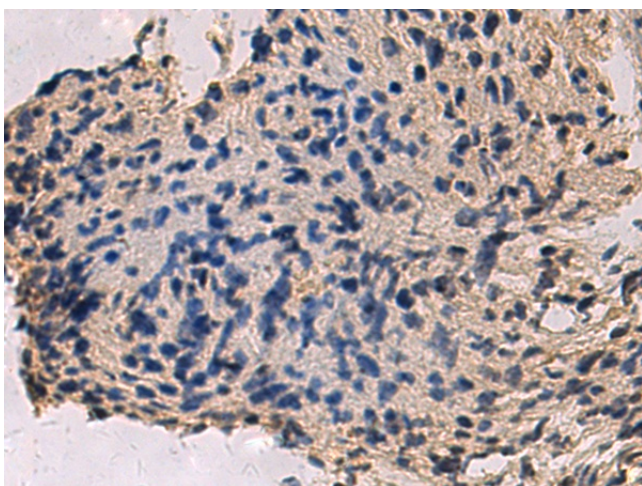


[View online »](#)

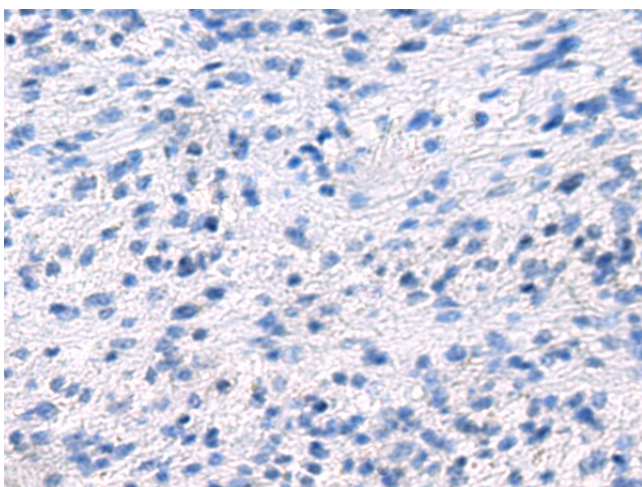
Product images:



Gel: 6%SDS-PAGE
Lysate: 40 μ g
Lane 1-2: HeLa and HepG2 cell lysates
Primary antibody: TA349209 (CEACAM5 Antibody) at dilution 1/700
Secondary antibody: Goat anti rabbit IgG at 1/5000 dilution
Exposure time: 1 minute



Immunohistochemistry of paraffin-embedded Human brain tissue using TA349209 (CEACAM5 Antibody) at dilution 1/30 (Original magnification: \times 200)



Immunohistochemistry of paraffin-embedded Human brain tissue using TA349209 (CEACAM5 Antibody) at dilution 1/30, treated with fusion protein. (Original magnification: x200)