

Product datasheet for **TA349206**

beta Actin (ACTB) Rabbit Polyclonal Antibody

Product data:

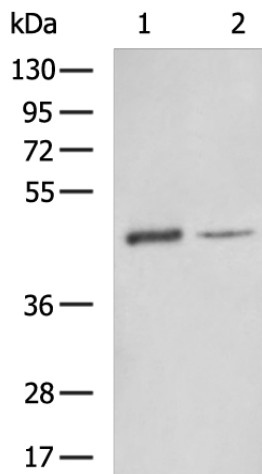
Product Type:	Primary Antibodies
Applications:	WB
Recommended Dilution:	WB: 500-2000 WB positive control: Corn leaves lysate, Arabidopsis protein lysates
Host:	Rabbit
Isotype:	IgG
Clonality:	Polyclonal
Immunogen:	Synthetic peptide of Arabidopsis thaliana actin
Formulation:	pH7.4 PBS, 0.05% NaN ₃ , 40% Glycerol
Concentration:	lot specific
Purification:	Antigen affinity purification
Conjugation:	Unconjugated
Storage:	Store at -20°C as received.
Stability:	Stable for 12 months from date of receipt.
Predicted Protein Size:	42 kDa
Gene Name:	actin, beta
Database Link:	NP_001092 Entrez Gene 60 Human P60709
Background:	Member of actin subclass composed of ACT12 and ACT4. RNA is expressed at very low levels in vegetative organs, low levels in flowers and very high levels in pollen. Expression of an ACT12/GUS fusion was found in vascular tissues, tapetum, developing and mature pollen, the root cap and in a ring of pericycle tissues during lateral root initiation and early development.
Synonyms:	BRWS1; PS1TP5BP1
Protein Families:	ES Cell Differentiation/IPS



[View online »](#)

Protein Pathways:

Adherens junction, Arrhythmogenic right ventricular cardiomyopathy (ARVC), Dilated cardiomyopathy, Focal adhesion, Hypertrophic cardiomyopathy (HCM), Leukocyte transendothelial migration, Pathogenic Escherichia coli infection, Regulation of actin cytoskeleton, Tight junction, Vibrio cholerae infection, Viral myocarditis

Product images:

Gel: 8%SDS-PAGE

Lysate: 40 µg

Lane 1-2: Corn leaves lysate

Arabidopsis protein lysates

Primary antibody: TA349206 (ACTIN Antibody) at dilution 1/1000

Secondary antibody: Goat anti rabbit IgG at 1/5000 dilution

Exposure time: 5 minutes