

Product datasheet for **TA349202**

GAS 6 (GAS6) Rabbit Polyclonal Antibody

Product data:

Product Type:	Primary Antibodies
Applications:	WB
Recommended Dilution:	WB: 1 - 2 ug/mL
Reactivity:	Human, Mouse, Rat
Host:	Rabbit
Isotype:	IgG
Clonality:	Polyclonal
Immunogen:	GAS6 antibody was raised against a 19 amino acid peptide from near the amino terminus of human GAS6.
Formulation:	PBS containing 0.02% sodium azide.
Concentration:	1 mg/ml
Purification:	GAS6 Antibody is affinity chromatography purified via peptide column.
Conjugation:	Unconjugated
Storage:	Store at -20°C as received.
Stability:	Stable for 12 months from date of receipt.
Predicted Protein Size:	Predicted: 75 kDa; Observed: 75 kDa
Gene Name:	growth arrest specific 6
Database Link:	NP_000811 Entrez Gene 14456 Mouse Entrez Gene 58935 Rat Entrez Gene 2621 Human Q14393

Background: The growth arrest-specific 6 (GAS6) protein is a gamma-carboxyglutamic acid (Gla)-containing protein and a member of a family of plasma vitamin K-dependent proteins. GAS6 is involved in vascular homeostasis, cell proliferation, apoptosis, leukocyte migration, and platelet aggregation (1,2). GAS6 is the ligand for the type I transmembrane receptor tyrosine kinase receptors Tyro3, Axl, and Mer (3). This gene is frequently overexpressed in many cancers and has been implicated as an adverse prognostic marker (4). Elevated protein levels are additionally associated with a variety of disease states, including venous thromboembolic disease, systemic lupus erythematosus, chronic renal failure, and preeclampsia (2).

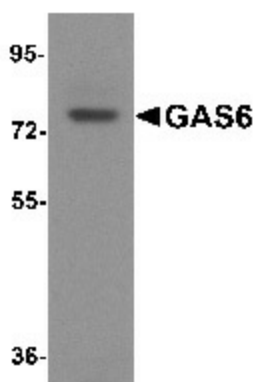


[View online »](#)

Synonyms: AXLLG; AXSF

Protein Families: Druggable Genome, Secreted Protein

Product images:



Western blot analysis of GAS6 in mouse heart tissue lysate with GAS6 antibody at 1 ug/mL.