

## Product datasheet for **TA349200**

### SLC38A4 Rabbit Polyclonal Antibody

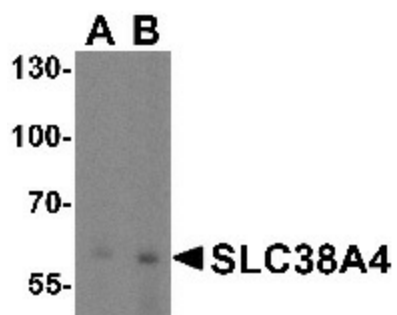
#### Product data:

Product Type:	Primary Antibodies
Applications:	WB
Recommended Dilution:	WB: 1 - 2 ug/mL
Reactivity:	Human, Mouse
Host:	Rabbit
Isotype:	IgG
Clonality:	Polyclonal
Immunogen:	SLC38A4 antibody was raised against an 18 amino acid peptide from near the center of human SLC38A4.
Formulation:	PBS containing 0.02% sodium azide.
Concentration:	1 mg/ml
Purification:	SLC38A4 Antibody is affinity chromatography purified via peptide column.
Conjugation:	Unconjugated
Storage:	Store at -20°C as received.
Stability:	Stable for 12 months from date of receipt.
Predicted Protein Size:	Predicted: 60 kDa; Observed: 60 kDa
Gene Name:	solute carrier family 38 member 4
Database Link:	<a href="#">NP_060488</a> <a href="#">Entrez Gene 55089 Human</a> <a href="#">Q969I6</a>
Background:	SLC38A4 is found predominantly in liver and transports both cationic and neutral amino acids (1,2). The transport of cationic amino acids by SLC38A4 is sodium and pH independent, while the transport of neutral amino acids is sodium and pH dependent (2). Recent evidence suggests that SLC38A4 functions as a regulator of protein synthesis downstream of the hepatocyte nuclear factor 4a during liver development (3). It has also been suggested that SLC38A4 has ATPase activity and is critically involved in the maintenance of mitochondrial homeostasis and cell survival (4).
Synonyms:	C1orf11; PALML



[View online »](#)

## Product images:



Western blot analysis of SLC38A4 in mouse kidney tissue lysate with SLC38A4 antibody at (A) 1 and (B) 2 ug/mL.