

Product datasheet for **TA349199**

INPP4B Rabbit Polyclonal Antibody

Product data:

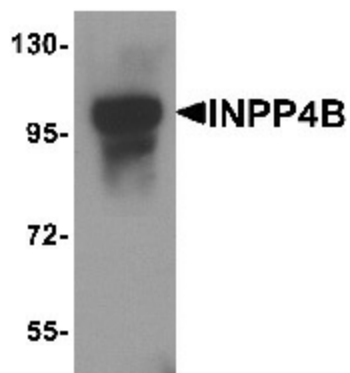
Product Type:	Primary Antibodies
Applications:	WB
Recommended Dilution:	WB: 1 - 2 ug/mL
Reactivity:	Human, Mouse, Rat
Host:	Rabbit
Isotype:	IgG
Clonality:	Polyclonal
Immunogen:	INPP4B antibody was raised against a 17 amino acid peptide near the amino terminus of human INPP4B.
Formulation:	PBS containing 0.02% sodium azide.
Concentration:	1 mg/ml
Purification:	INPP4B antibody is affinity chromatography purified via peptide column.
Conjugation:	Unconjugated
Storage:	Store at -20°C as received.
Stability:	Stable for 12 months from date of receipt.
Predicted Protein Size:	Predicted: 102 kDa; Observed: 100 kDa
Gene Name:	inositol polyphosphate-4-phosphatase type II B
Database Link:	NP_003857 Entrez Gene 8821 Human Q15327
Background:	Inositol polyphosphate 4-phosphatase type II (INPP4B) is one of the enzymes involved in phosphatidylinositol signaling pathways. It removes the phosphate group at position 4 of the inositol ring from inositol 3,4-bisphosphate (1). INPP4B can function as a tumor suppressor by inhibiting PI3K signaling. In human epithelial cells, knockdown of INPP4B expression resulted in enhanced Akt activation, anchorage-independent growth, and enhanced overall motility (2). It is thought INPP4B may also have oncogenic functions as INPP4B-dependent PI3K signaling is mediated by SGK3 in breast cancer cells and expression of INPP4B leads to enhanced SGK3 activation and suppression of AKT phosphorylation (3).



[View online »](#)

Synonyms: MGC132014

Product images:



Western blot analysis of INPP4B in 3T3 cell lysate with INPP4B antibody at 1 ug/mL.