

Product datasheet for **TA349198**

VT11B Rabbit Polyclonal Antibody

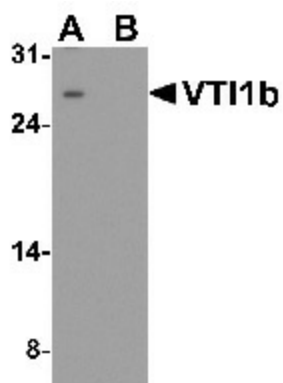
Product data:

Product Type:	Primary Antibodies
Applications:	WB
Recommended Dilution:	WB: 1 - 2 ug/mL
Reactivity:	Human, Mouse, Rat
Host:	Rabbit
Isotype:	IgG
Clonality:	Polyclonal
Immunogen:	VT11b antibody was raised against a 17 amino acid peptide near the center of human VT11b.
Formulation:	PBS containing 0.02% sodium azide.
Concentration:	1 mg/ml
Purification:	VT11b antibody is affinity chromatography purified via peptide column.
Conjugation:	Unconjugated
Storage:	Store at -20°C as received.
Stability:	Stable for 12 months from date of receipt.
Predicted Protein Size:	Predicted: 14, 19, 26 kDa; Observed: 27 kDa
Gene Name:	vesicle transport through interaction with t-SNAREs 1B
Database Link:	NP_006361 Entrez Gene 10490 Human Q9UEU0
Background:	Vesicle transport through interaction with t-SNAREs homolog 1 (VT1a and VT1b) are involved in vesicular transport from the late endosomes to the trans-Golgi network (1). They are both localized in the trans-Golgi network, with VT1a also found in the Golgi apparatus and VT1b in endosomes (2,3). It is thought that VT1b along with the SNARE protein VAMP8 mediates the fusion of antimicrobial and canonical autophagosomes with lysosomes, an essential process for autophagy (4).
Synonyms:	CARD4; CLR7.1; NLRC1



[View online »](#)

Product images:



Western blot analysis of VTI1b in HeLa cell lysate with VTI1b antibody at 1 ug/mL in (A) the absence and (B) the presence of blocking peptide.