

Product datasheet for **TA349195**

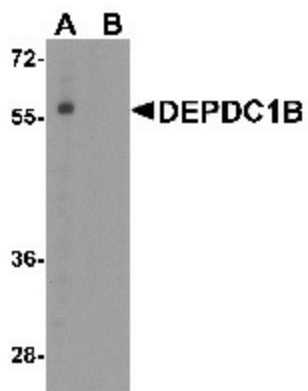
DEPDC1B Rabbit Polyclonal Antibody

Product data:

Product Type:	Primary Antibodies
Applications:	WB
Recommended Dilution:	WB: 1 - 2 ug/mL
Reactivity:	Human
Host:	Rabbit
Isotype:	IgG
Clonality:	Polyclonal
Immunogen:	DEPDC1B antibody was raised against a 19 amino acid peptide near the carboxy terminus of human DEPDC1B
Formulation:	PBS containing 0.02% sodium azide.
Concentration:	1 mg/ml
Purification:	DEPDC1B antibody is affinity chromatography purified via peptide column.
Conjugation:	Unconjugated
Storage:	Store at -20°C as received.
Stability:	Stable for 12 months from date of receipt.
Predicted Protein Size:	Predicted: 58 kDa; Observed: 57 kDa
Gene Name:	DEP domain containing 1B
Database Link:	NP_060839 Entrez Gene 55789 Human Q8WUY9
Background:	The DEP domain-containing 1B (DEPDC1B) protein was initially identified as a radiation response biomarker in human lymphoblastoid cell lines (1). Like the related protein DEPDC1A, expression of DEPDC1B correlates with a poor prognosis in cancer patients (2,3). Studies have shown that DEPDC1B levels are upregulated in non-small cell lung cancer (NSCLC) and have an inverse correlation with patient survival. Ectopic expression of DEPDC1B in NSCLC activated Wnt/B-catenin signaling and enhanced cell migration and invasion while silencing DEPDC1B expression suppressed these traits (2).
Synonyms:	BRCC3; XTP1


[View online »](#)

Product images:



Western blot analysis of DEPDC1B in K562 cell lysate with DEPDC1B antibody at 1 ug/mL in (A) the absence and (B) the presence of blocking peptide.