

Product datasheet for **TA349193**

TMEPAI (PMEPA1) Rabbit Polyclonal Antibody

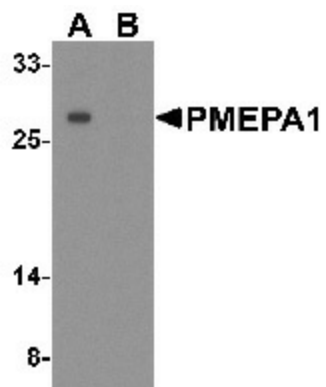
Product data:

Product Type:	Primary Antibodies
Applications:	WB
Recommended Dilution:	WB: 1 - 2 ug/mL
Reactivity:	Human, Mouse, Rat
Host:	Rabbit
Isotype:	IgG
Clonality:	Polyclonal
Immunogen:	PMEPA1 antibody was raised against a 16 amino acid peptide near the center of human PMEPA1.
Formulation:	PBS containing 0.02% sodium azide.
Concentration:	1 mg/ml
Purification:	PMEPA1 antibody is affinity chromatography purified via peptide column.
Conjugation:	Unconjugated
Storage:	Store at -20°C as received.
Stability:	Stable for 12 months from date of receipt.
Predicted Protein Size:	Predicted: 26, 28, 32 kDa; Observed: 27 kDa
Gene Name:	prostate transmembrane protein, androgen induced 1
Database Link:	NP_064567 Entrez Gene 56937 Human Q969W9
Background:	The prostate transmembrane protein, androgen induced 1 (PMEPA1) protein is a transmembrane protein that contains a Smad interacting motif (SIM) (1,2). Expression of this gene is induced by androgens and transforming growth factor beta, and the encoded protein suppresses the androgen receptor and transforming growth factor beta signaling pathways through interactions with Smad proteins (3). Overexpression of this gene may play a role in multiple types of cancer (2,4).
Synonyms:	AGM5; LRR8; SWELL1



[View online »](#)

Product images:



Western blot analysis of PMEPA1 in A549 cell lysate with PMEPA1 antibody at 1 ug/mL in (A) the absence and (B) the presence of blocking peptide.