

## Product datasheet for **TA349192**

### Trophinin (TRO) Rabbit Polyclonal Antibody

#### Product data:

Product Type:	Primary Antibodies
Applications:	WB
Recommended Dilution:	WB: 1 - 2 ug/mL
Reactivity:	Human, Mouse, Rat
Host:	Rabbit
Isotype:	IgG
Clonality:	Polyclonal
Immunogen:	Trophinin antibody was raised against a 16 amino acid peptide near the amino terminus of human Trophinin.
Formulation:	PBS containing 0.02% sodium azide.
Concentration:	1 mg/ml
Purification:	Trophinin antibody is affinity chromatography purified via peptide column.
Conjugation:	Unconjugated
Storage:	Store at -20°C as received.
Stability:	Stable for 12 months from date of receipt.
Predicted Protein Size:	Predicted: 78, 157 kDa; Observed: 94 kDa
Gene Name:	trophinin
Database Link:	<a href="#">NP_001034794</a> <a href="#">Entrez Gene 7216 Human</a> <a href="#">Q12816</a>

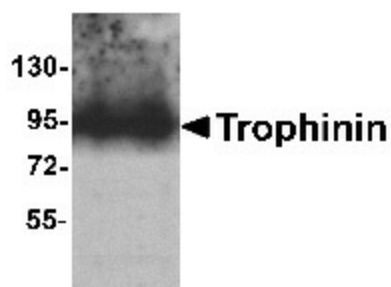
**Background:** Trophinin, also known as TRO or MAGED3, is an apical cell adhesion molecule that is implicated in the initial attachment during the process of embryo implantation and functions by mediating cell adhesion between trophoblastic and endometrial epithelial cells (1,2). Trophinin is a membrane protein expressed in chorionic villi trophoblasts and in maternal endometrial epithelial cells in an implantation-dependent manner and interacts with Bystin and Tastin, facilitating cell adhesion and embryo implantation (3,4). The induction of Trophinin expression may be a useful method for improving implantation rates and can be a potential diagnostic factor and biomarker for human cancer (4,5).



[View online »](#)

Synonyms: B12; B61; BTBD34; EDP1; hBACURD2

### Product images:



Western blot analysis of Trophinin in rat liver tissue lysate with Trophinin antibody at 1 ug/mL.