

## Product datasheet for TA349191

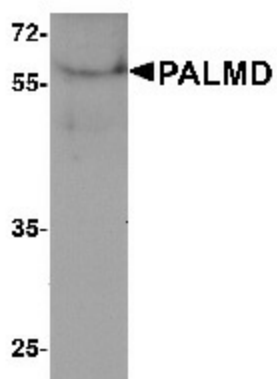
### PALMD Rabbit Polyclonal Antibody

#### Product data:

Product Type:	Primary Antibodies
Applications:	WB
Recommended Dilution:	WB: 1 - 2 ug/mL
Reactivity:	Human
Host:	Rabbit
Isotype:	IgG
Clonality:	Polyclonal
Immunogen:	PALMD antibody was raised against a 15 amino acid peptide near the carboxy terminus of human PALMD.
Formulation:	PBS containing 0.02% sodium azide.
Concentration:	1 mg/ml
Purification:	PALMD antibody is affinity chromatography purified via peptide column.
Conjugation:	Unconjugated
Storage:	Store at -20°C as received.
Stability:	Stable for 12 months from date of receipt.
Predicted Protein Size:	Predicted: 61 kDa; Observed: 60 kDa
Gene Name:	palmdelphin
Database Link:	<a href="#">NP_060204</a> <a href="#">Entrez Gene 54873 Human</a> <a href="#">Q9NP74</a>
Background:	Palmdelphin (PALMD) is a member of the paralemmin families that are lipid-anchored proteins having a role in the cell shape control and cell dynamics (1,2). While Paralemmin proteins typically anchor to the cytoplasm through via palmytoylation and prenylation, PALMD is found predominantly in the cytosol (3). PALMD is targeted to the nucleus to induce apoptosis in response to DNA damage (3-5). Abnormal genetic alterations in PALMD are observed in many malignant tumors (5).
Synonyms:	C1orf11; PALML


[View online »](#)

## Product images:



Western blot analysis of PALMD in human bladder tissue lysate with PALMD antibody at 1 ug/mL.