

Product datasheet for **TA349190**

LRRC8A Rabbit Polyclonal Antibody

Product data:

Product Type:	Primary Antibodies
Applications:	WB
Recommended Dilution:	WB: 1 - 2 ug/mL
Reactivity:	Human, Mouse, Rat
Host:	Rabbit
Isotype:	IgG
Clonality:	Polyclonal
Immunogen:	LRRC8A antibody was raised against a 15 amino acid peptide near the amino terminus of human LRRC8A.
Formulation:	PBS containing 0.02% sodium azide.
Concentration:	1 mg/ml
Purification:	LRRC8A antibody is affinity chromatography purified via peptide column.
Conjugation:	Unconjugated
Storage:	Store at -20°C as received.
Stability:	Stable for 12 months from date of receipt.
Predicted Protein Size:	Predicted: 89 kDa; Observed: 95 kDa
Gene Name:	leucine-rich repeat containing 8 family member A
Database Link:	NP_062540 Entrez Gene 56262 Human Q8IWT6

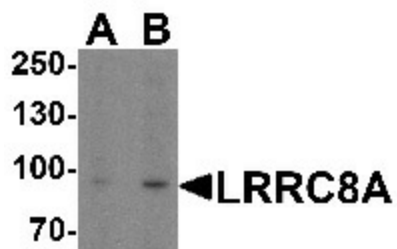
Background: The leucine rich repeat containing 8 family member A protein (LRRC8A) belongs the LRRC8 family of proteins within the LRR superfamily of proteins, which are involved in diverse biological processes, including cell adhesion, cellular trafficking, and hormone-receptor interactions (1,2). LRRC8A is a four-pass transmembrane protein that plays a role in B cell development. Defects in this gene cause autosomal dominant non-Bruton type agammaglobulinemia, an immunodeficiency disease resulting from defects in B cell maturation (1). LRRC8A has also been shown to be an essential component of the volume-regulated anion channel VRAC (3).



[View online »](#)

Synonyms: AGM5; LRRC8; SWELL1

Product images:



Western blot analysis of LRRC8A in EL4 cell lysate with LRRC8A antibody at (A) 1 and (B) 2 ug/mL.