

Product datasheet for **TA349189**

IZUMO1 Rabbit Polyclonal Antibody

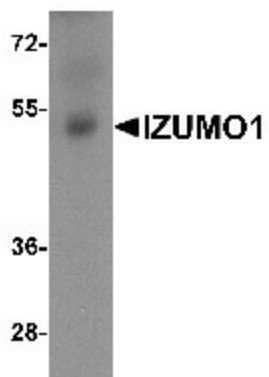
Product data:

Product Type:	Primary Antibodies
Applications:	WB
Recommended Dilution:	WB: 1 - 2 ug/mL
Reactivity:	Human
Host:	Rabbit
Isotype:	IgG
Clonality:	Polyclonal
Immunogen:	IZUMO1 antibody was raised against an 18 amino acid peptide near the center of human IZUMO1
Formulation:	PBS containing 0.02% sodium azide.
Concentration:	1 mg/ml
Purification:	IZUMO1 antibody is affinity chromatography purified via peptide column.
Conjugation:	Unconjugated
Storage:	Store at -20°C as received.
Stability:	Stable for 12 months from date of receipt.
Predicted Protein Size:	Predicted: 35, 39, 42 kDa; Observed: 52 kDa
Gene Name:	izumo sperm-egg fusion 1
Database Link:	NP_872381 Entrez Gene 284359 Human Q8IYV9
Background:	IZUMO1, a sperm-specific protein, is essential for sperm-egg plasma membrane binding and fusion. It is involved in the fertilization process and in the fusion of the sperm with the egg (1,2). IZUMO1 is expressed as at least four isoforms produced by alternative splicing and contains one Ig-like (immunoglobulin-like) C2-type domain (3). Lack of IZUMO1 in males, due to homozygous mutation in the gene that encodes IZUMO1, results in sterility due to an inability to penetrate the plasma membrane of the egg (4).
Synonyms:	DRLM



[View online »](#)

Product images:



Western blot analysis of IZUMO1 in human testis tissue lysate with IZUMO1 antibody at 1 ug/mL.