

## Product datasheet for **TA349188**

### S1PR2 Rabbit Polyclonal Antibody

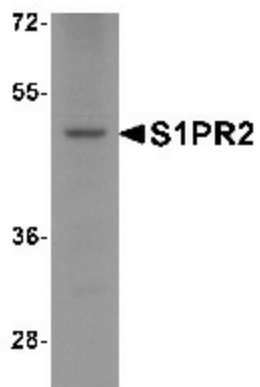
#### Product data:

Product Type:	Primary Antibodies
Applications:	WB
Recommended Dilution:	WB: 1 - 2 ug/mL
Reactivity:	Human, Mouse, Rat
Host:	Rabbit
Isotype:	IgG
Clonality:	Polyclonal
Immunogen:	S1PR2 antibody was raised against an 16 amino acid peptide near the carboxy terminus of human S1PR2.
Formulation:	PBS containing 0.02% sodium azide.
Concentration:	1 mg/ml
Purification:	S1PR2 antibody is affinity chromatography purified via peptide column.
Conjugation:	Unconjugated
Storage:	Store at -20°C as received.
Stability:	Stable for 12 months from date of receipt.
Predicted Protein Size:	Predicted: 39 kDa; Observed: 50 kDa
Gene Name:	sphingosine-1-phosphate receptor 2
Database Link:	<a href="#">NP_004221</a> <a href="#">Entrez Gene 9294 Human</a> <a href="#">O95136</a>
Background:	The Sphingosine 1-phosphate receptor 2 (S1PR2) protein was initially identified as G-protein coupled receptor thought to be involved in development (1) and was found to mediate sphingosine 1-phosphate (SPP)-induced cell rounding and neurite retraction (2). S1PR2 and the related protein S1PR3 (also known as EDG3) are also thought to mediate the SPP-induced cell proliferation, survival, and related signaling events (3). S1PR2 has also been found to be key regulator in acute vascular inflammation and may be a novel therapeutic target for vascular disorders (4).
Synonyms:	ARHI; NOEY2



[View online »](#)

## Product images:



Western blot analysis of S1PR2 in HeLa cell lysate with S1PR2 antibody at 1 ug/mL.