

Product datasheet for **TA349183**

ERp72 (PDIA4) Rabbit Polyclonal Antibody

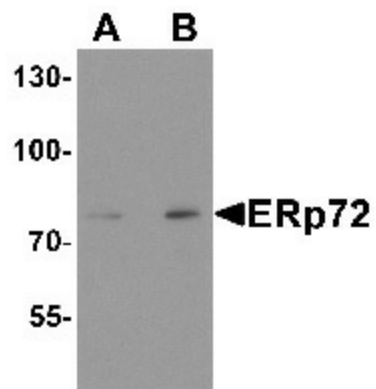
Product data:

Product Type:	Primary Antibodies
Applications:	WB
Recommended Dilution:	WB: 1 - 2 ug/mL
Reactivity:	Human, Mouse, Rat
Host:	Rabbit
Isotype:	IgG
Clonality:	Polyclonal
Immunogen:	ERp72 antibody was raised against a 15 amino acid peptide near the carboxy terminus of human ERp72.
Formulation:	PBS containing 0.02% sodium azide.
Concentration:	1 mg/ml
Purification:	ERp72 antibody is affinity chromatography purified via peptide column.
Conjugation:	Unconjugated
Storage:	Store at -20°C as received.
Stability:	Stable for 12 months from date of receipt.
Predicted Protein Size:	Predicted: 71 kDa; Observed: 75 kDa
Gene Name:	protein disulfide isomerase family A member 4
Database Link:	NP_004902 Entrez Gene 12304 MouseEntrez Gene 116598 RatEntrez Gene 9601 Human P13667
Background:	Protein disulfide isomerase (PDI) has two thioredoxin homology domains and catalyzes the formation and isomerization of these disulfide bonds (1,2). ER stress protein 72 (ERp72), also designated protein disulfide-isomerase A4, is involved in the catalysis of protein -S-S- bond rearrangement (3). It plays a role in the formation and isomerization of disulfide bonds (3,4).
Synonyms:	ERp-72; ERP70; ERP72
Protein Families:	Druggable Genome, Transmembrane
Protein Pathways:	Vibrio cholerae infection



[View online »](#)

Product images:



Western blot analysis of ERp72 in human colon tissue lysate with ERp72 antibody at (A) 1 and (B) 2 ug/mL.