

Product datasheet for **TA349182**

MEK1 (MAP2K1) Rabbit Polyclonal Antibody

Product data:

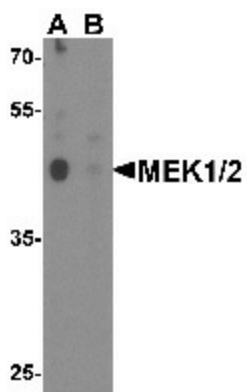
Product Type:	Primary Antibodies
Applications:	WB
Recommended Dilution:	WB: 1 - 2 ug/mL
Reactivity:	Human, Mouse, Rat
Host:	Rabbit
Isotype:	IgG
Clonality:	Polyclonal
Immunogen:	MEK1/2 antibody was raised against a 15 amino acid peptide near the center of human MEK1.
Formulation:	PBS containing 0.02% sodium azide.
Concentration:	1 mg/ml
Purification:	MEK1/2 antibody is affinity chromatography purified via peptide column.
Conjugation:	Unconjugated
Storage:	Store at -20°C as received.
Stability:	Stable for 12 months from date of receipt.
Predicted Protein Size:	Predicted: 43 kDa; Observed: 44 kDa
Gene Name:	mitogen-activated protein kinase kinase 1
Database Link:	NP_002746 Entrez Gene 5604 Human Q0VD16
Background:	The mitogen-activated protein kinase kinase 1 (MAP2K1, also known as MEK1) and the highly homologous MEK2 are members of the dual specificity protein kinase family (1). MAP kinases, also known as extracellular signal-regulated kinases (ERKs), act as an integration point for multiple biochemical signals (2). MEK1 lies upstream of MAP kinases and stimulates the enzymatic activity of MAP kinases upon wide variety of extra- and intracellular signals. As an essential component of MAP kinase signal transduction pathway, MEK1 is involved in many cellular processes such as proliferation, differentiation, transcription regulation and development (2).



[View online »](#)

Synonyms: AGOTC; PHOX1; PMX1; PRX-1; PRX1

Product images:



Western blot analysis of MEK1/2 in human brain tissue lysate with MEK1/2 antibody at 1 ug/mL in (A) the absence and (B) the presence of blocking peptide.